



Network Manager
nominated by
the European Commission



Monthly Network Operations Report

Overview – March 2016



1. SUMMARY

Traffic in March 2016 increased by 2.5% compared to March 2015 with strong growth between Europe and both the United States and United Arab Emirates.

Total ATFM delays increased by 139.4% in March 2016. En-route ATFM delays increased by 387.4%; airport ATFM delays increased by 24.4%.

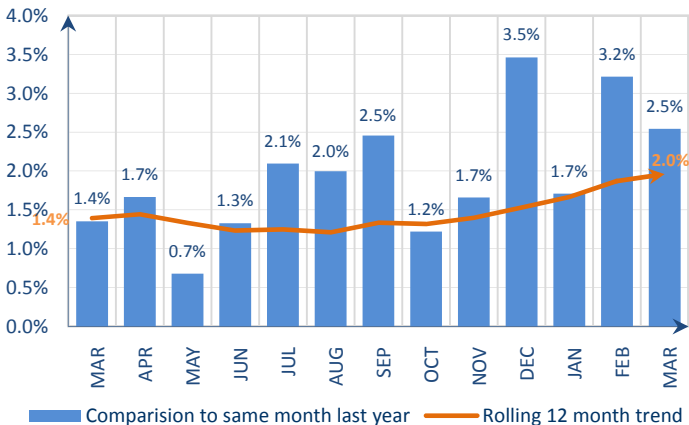
Highlights include:

- French ATC industrial action on 20-22 and 31 March resulted in an estimated 2700 fewer flights in the network and ATFM delays of 503,662 minutes;
- Brussels airport closure to passenger traffic from 22 March impacted traffic with carriers reducing schedules and/or moving flights to other airports;
- ERATO ATM system implementation generated 98,836 minutes ATFM delays in Brest ACC;
- Seasonal weather (fog, strong winds, snow) impacted operations particularly at London/Heathrow, London/Gatwick and Brussels/National airports, together with London TMA;
- Aerodrome capacity issues generated delays at Istanbul/Sabiha Gökçen and Istanbul/Ataturk airports, and to a lesser extent Amsterdam/Schiphol and Zurich;
- ATC capacity/staffing delays in Brest, Paris, Madrid, Maastricht, Barcelona and London TMA ACCs;
- Geneva airport completed A-CDM implementation on 16 March;
- Paris/Charles de Gaulle completed RECAT-EU implementation on 22 March.

The average en-route delay per flight in NM areaⁱ in March 2016 was 1.07 min/ft, which was above the monthly guidelineⁱ value of 0.25 min/ft. The average YTD en-route ATFM delay per flight in 2016 in the NM area is 0.68 min/ft, which is above the corresponding guideline value of 0.22 min/ft.

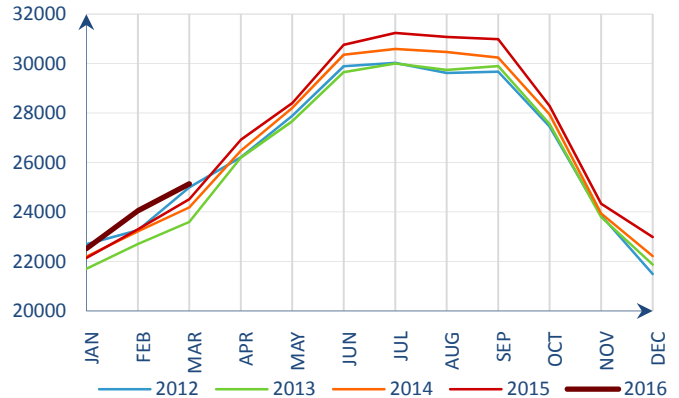
2. TOTAL TRAFFIC

Monthly traffic trend



Traffic increased by 2.5 % in March 2016ⁱⁱ.

Average daily traffic for last 5 Years

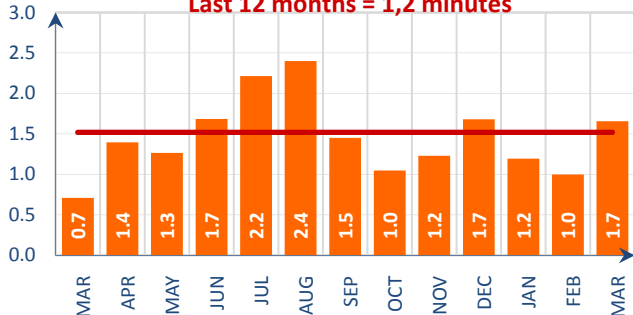


Average daily traffic in March 2016 was the highest March traffic since 2012.

3. ATFM DELAYS

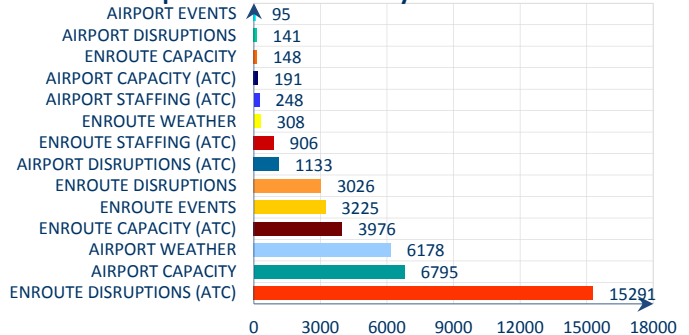
Monthly delay (min) per flight

Last 12 months = 1,2 minutes



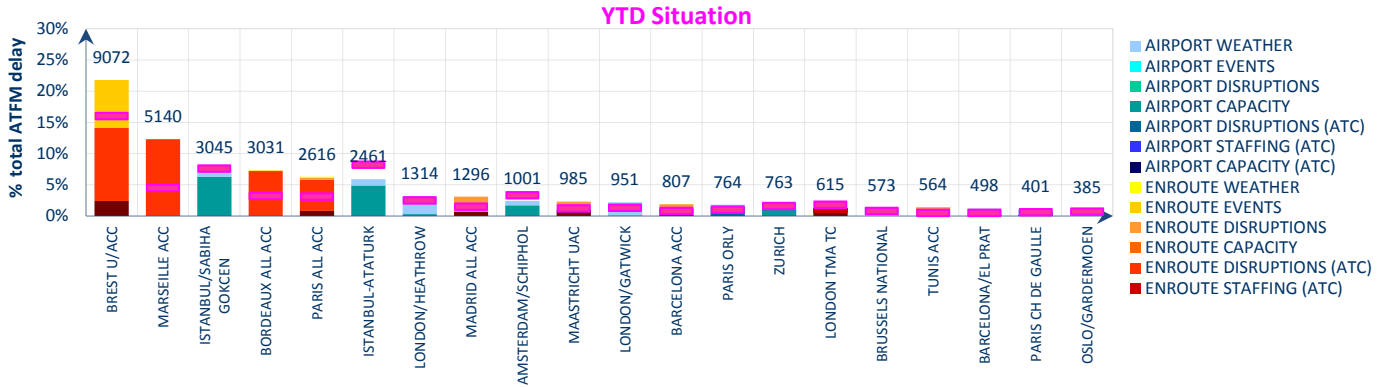
Average ATFM delay per flight increased from 0.70 min/ft to 1.7 min/ft in March 2016ⁱⁱ.

Proportion of ATFM delays in March 2016



En-route ATC disruptions (36.7%), airport capacity (16.3%) and airport weather (14.8%) were the main causes of ATFM delays in March 2016.

Top 20 delay locations (min) in March 2016

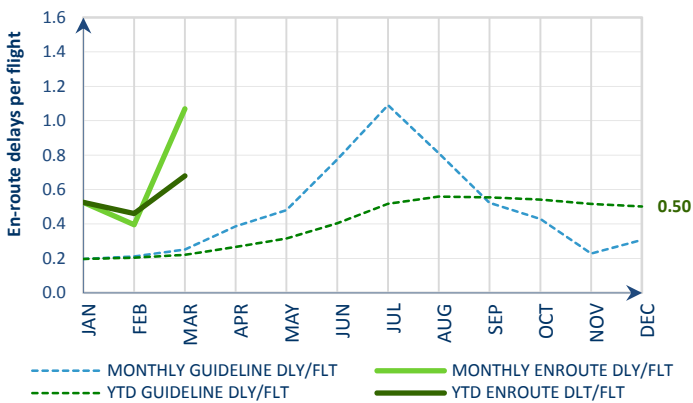


These are the top 20 delay generating locations for the reporting month with respect to ATFM delays. Figures are the average daily delay in minutes for the individual locations. Pink dashes (Year-To-Date - YTD) indicate their average daily ATFM delay since the beginning of the year.

- French ATC industrial action on 20-22 and 31 March resulted in an estimated 2700 fewer flights in the network and ATFM delays of 502,287 minutes;
- Brussels airport closure to passenger traffic from 22 March impacted traffic with carriers reducing schedules and/or moving flights to other airports;;
- ERATO ATM system implementation generated 98,836 minutes ATFM delays in Brest ACC;
- Seasonal weather (fog, strong winds, snow) impacted operations particularly at London/Heathrow, London/Gatwick and Brussels/National airports, together with London TMA;
- Aerodrome capacity issues generated delays at Istanbul/Sabiha Gökçen and Istanbul/Ataturk airports, and to a lesser extent Amsterdam/Schiphol and Zurich;
- ATC capacity/staffing delays in Brest, Paris, Madrid, Maastricht, Barcelona and London TMA ACCs;
- Geneva airport completed A-CDM implementation on 16 March;
- Paris/Charles de Gaulle completed RECAT-EU implementation on 22 March.

4. EN-ROUTE ATFM DELAY MONITORING

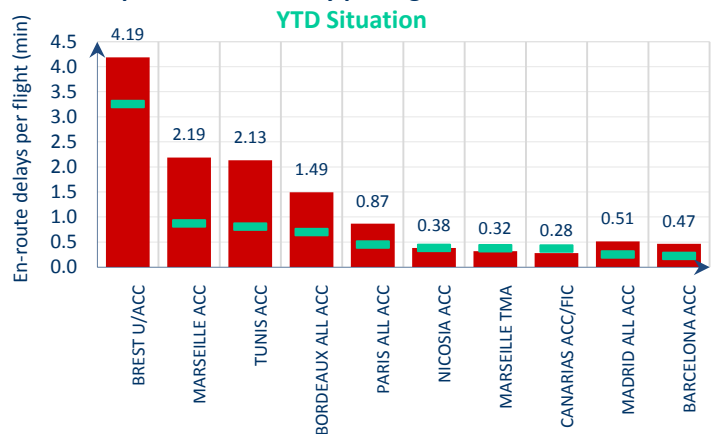
Monthly en-route delay per flight monitoring



Reporting month: The average en-route delay per flight in the NM area¹ in March was 1.07 min/flt, which is significantly above the corresponding monthly guideline value of 0.25 min/flt.

Year To Date: The average YTD en-route ATFM delay per flight in 2016 in the NM area is 0.68 min/flt, which is significantly above the corresponding guideline value of 0.22 min/flt.

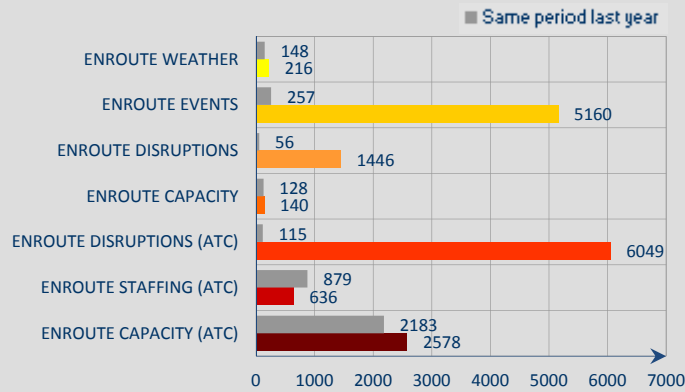
Top 10 en-route delay per flight in March 2016



French ATC industrial action in March resulted in delays for the Brest, Marseille, Bordeaux and Paris ACCs with additional delay generated by Madrid, Canarias, Tunis and Barcelona ACCs due locally reported ATFM protective measures.

Implementation of ERATO ATM system also generated significant ATFM delays in Brest ACC.

Year-to-date average daily en-route delays



En-route ATFM delays in 2016 are above the corresponding levels in 2015 with;
En-route disruption delays in Madrid and Maastricht ACCs (application of ATFM protective measures during French ATC industrial action in January); delays in Madrid, Bordeaux and Canarias ACCs due to Brest ACC ERATO implementation;
En-route event delays in Brest ACC ERATO system implementation;
En-route ATC capacity delays at Paris, Maastricht, Brest, Madrid, Lisboa, Barcelona, Nicosia and Canarias ACCs;
En-route weather some delays due to en-route weather in London, Paris, Amsterdam and Langen ACCs;
En-route ATC staffing delays in at Karlsruhe, London TMA and Langen ACC;
En-route capacity delays in, Karlsruhe UAC;

NOTICE

Traffic and Delay Comparisons

All traffic and delay comparisons are between report month and equivalent month of previous year, unless otherwise stated.

NM Area

All figures presented in this report are for the geographical area that is within Network Manager's responsibility (NM area).

Regulation Reason Groupings

See Analysis for more information on colour coding.

Reporting Assumptions and Descriptions

For further information on the NM Area and the regulation reason groupings, go to the Reporting Assumptions and Descriptions document available on the EUROCONTROL website at <http://www.eurocontrol.int/articles/network-operations-monitoring-and-reporting>.

© 2016 The European Organisation for the Safety of Air Navigation (EUROCONTROL).

This document is published by EUROCONTROL in the interests of exchange of information. It may be copied in whole or in part, providing that the copyright notice and disclaimer are included. The information contained in the document may not be modified without prior written permission from EUROCONTROL. EUROCONTROL makes no warranty, either implied or express, for the information contained in this document, neither does it assume any legal liability or responsibility for the accuracy, completeness or usefulness of this information.

Operational Analysis & Reporting,
 Performance, Forecasts and Relations (PFR) Unit,
 Network Manager Directorate (NMD),
 EUROCONTROL,
 96 Rue de la Fusée,
 B - 1130 Brussels
 Telephone: +32 (0)2 729 1155
 Fax: +32 (0)2 729 9189
 mailto:nm.ops.perf@eurocontrol.int
<http://www.eurocontrol.int/articles/network-operations-monitoring-and-reporting>

ⁱ NM's calculation that provides the guideline en-route delay (min) requirements to achieve the annual target (0.5 min/flight).

ⁱⁱ See Notice on page 1 for more information on traffic and delay comparison.