

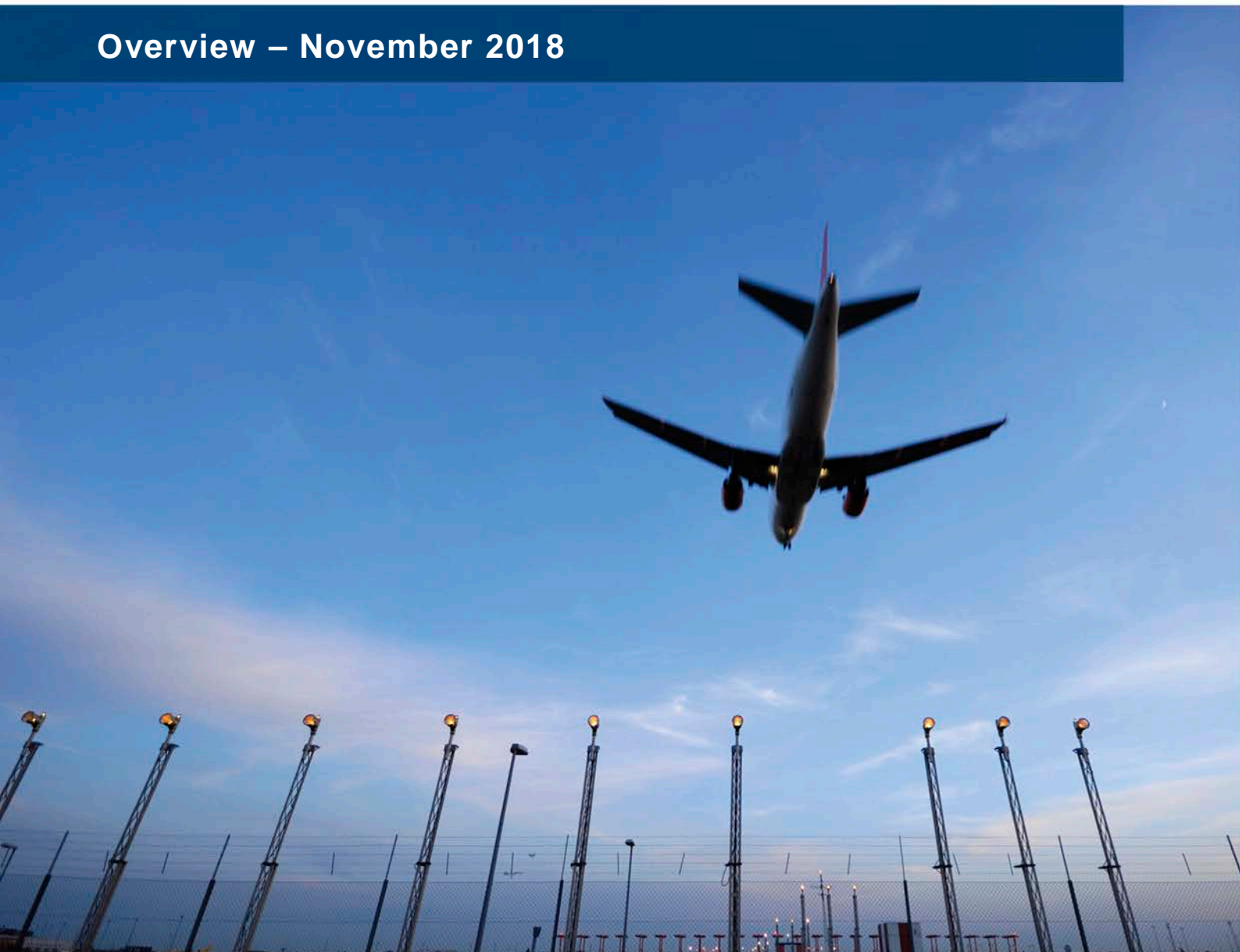


Network Manager
nominated by
the European Commission



Monthly Network Operations Report

Overview – November 2018



1. SUMMARY

November 2018 saw a fall in traffic compared to October as aircraft operators moved to the winter schedule, except for the South/West axis where the traffic is going up due to end of the year period. Traffic increased by 4.2% compared to November 2017 and was in line with the baseline forecast. Ten states added more than 50 flights daily to the network with Germany, France and Spain as the top contributors.

En-route ATFM delays (13,305 min/daily) increased by 133.1% and airport ATFM delays (15,588 min/daily) increased by 54.2% compared to November 2017.

There were, on average, 301 daily flights with an en-route ATFM delay of at least 15 minutes (+93.1% compared to November 2017).

Highlights include:

Lanzarote and Fuerteventura connected to the network as Advanced ATC Tower airports on 20 November.

En-route:

- En-route ATC capacity delays in Karlsruhe, Lisbon ACCs;
- High ATC staffing delays in Karlsruhe UAC ;
- Seasonal weather impacted Canarias ACC.

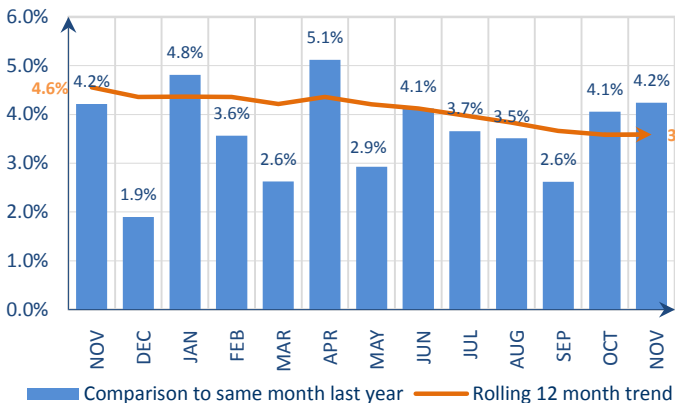
Airport:

- Seasonal weather impacted London and Paris airports.
- Airport capacity in conjunction with maintenance generated high delays at Athens airport.

The average en-route ATFM delay per flight in the NM areaⁱ in November was 0.49 min/ft, which is above the corresponding monthly guidelineⁱⁱ value of 0.18 min/ft. The average YTD en-route ATFM delay per flight in 2018 in the NM areaⁱ is 1.81 min/ft which is more than three times the corresponding guideline value of 0.52 min/ft.

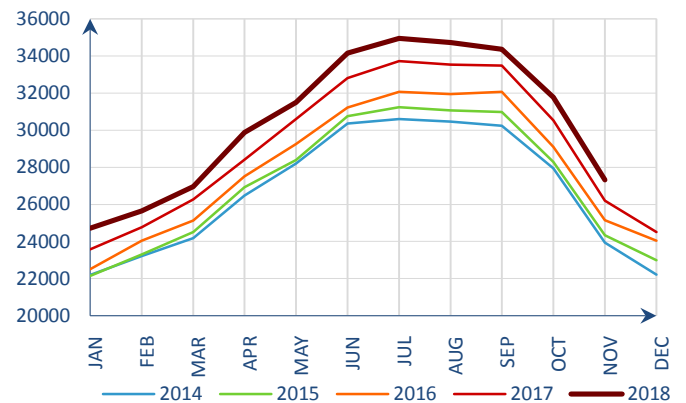
2. TOTAL TRAFFIC

Monthly traffic trend



Traffic increased by 4.2% in November 2018ⁱⁱⁱ.

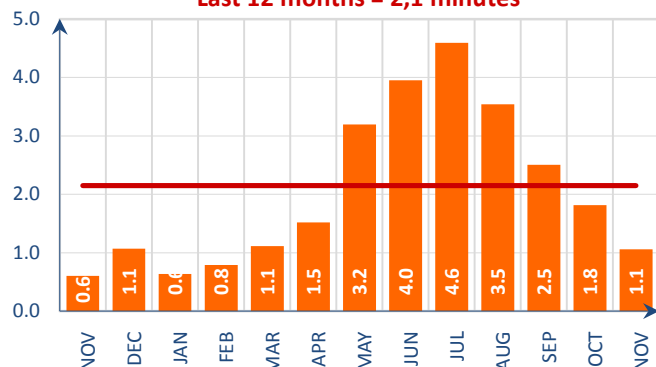
Average daily traffic for last 5 Years



Average daily traffic in November 2018 was the highest ever recorded for November.

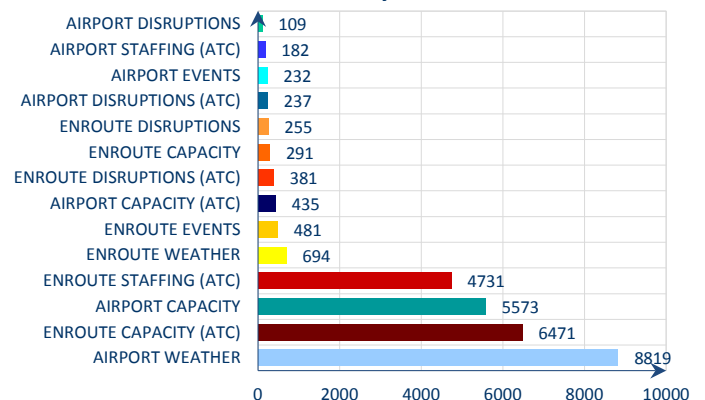
3. ATFM DELAYS

Monthly delay (min) per flight
Last 12 months = 2,1 minutes



Average ATFM delay per flight decreased from 1.8 min/ft in October 2018 to 1.1 min/ft in November 2018.

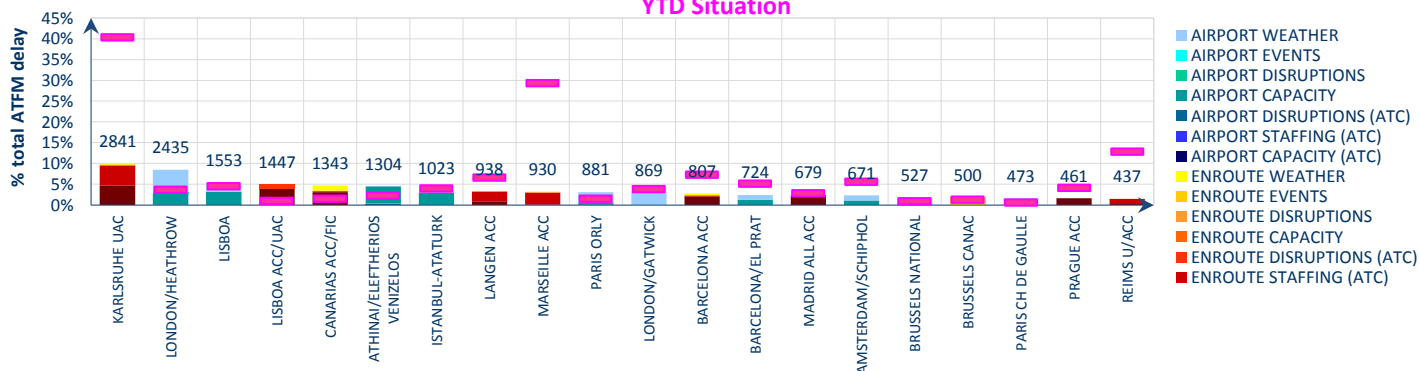
Reasons for ATFM delays in November 2018



Airport weather (30.5%), en-route ATC capacity (22.4%), airport capacity (19.3%) and en-route ATC staffing (16.4%) were the main causes of ATFM delays in November 2018.

Top 20 delay locations (min) in November 2018

YTD Situation

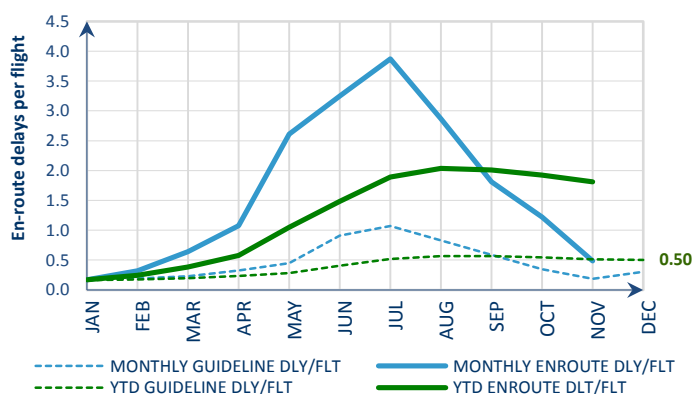


These are the top 20 delay generating locations for the reporting month with respect to total ATFM delays. Figures are the average daily delays in minutes for the individual locations.

- Seasonal weather impacted operations strongly at London airports, and to a lesser extent at Lisbon, Paris/Orly, Paris/Charles de Gaulle, Barcelona and Amsterdam/Schiphol airports;
- En-route capacity delays in Karlsruhe, Lisbon, Canarias, Madrid, Barcelona and Prague ACCs;
- Airport capacity in conjunction with maintenance generated high delays at Athens airport;
- Military activity to the north of the airfield of Lisbon airport generated capacity delays;
- En-route staffing delays in Karlsruhe, Langen, Marseille and Reims ACCs;
- Radar maintenance in Lisbon ACC generated ATC disruption delays throughout the month.

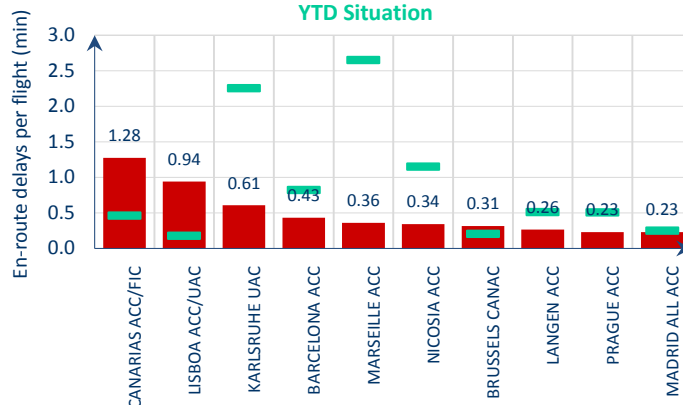
4. EN-ROUTE ATFM DELAY MONITORING

Monthly en-route delay per flight monitoring



Top 10 en-route delay per flight in November 2018

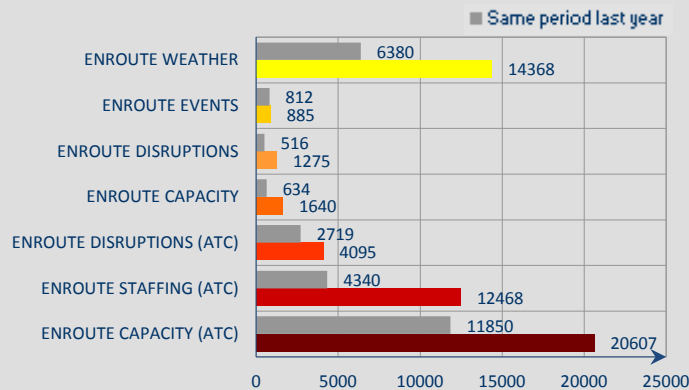
YTD Situation



Reporting month: The average en-route ATFM delay per flight in the NM area¹ in November was 0.49 min/flt, which is well above the corresponding monthly guidelineⁱⁱ value of 0.18 min/flt.
Year To Date: The average YTD en-route ATFM delay per flight in 2018 in the NM area¹ is 1.81 min/flt which is more than three times the corresponding guideline value of 0.52 min/flt.

ATC capacity delays in Canarias, Lisbon, Karlsruhe, Barcelona, Nicosia, Prague and Madrid ACCs; Delays due to ATC staffing in Karlsruhe, Marseille and Langen ACCs; Weather issues in Canarias ACC; ATM system upgrade in Brussels CANAC.

Year-to-date average daily en-route delays



All en-route delays are above last year's level (YTD), the main contributors are:

- En-route weather (+125.2%)* in Karlsruhe, Maastricht, Marseille, Vienna and Reims ACCs;
- En-route events (+9.0%)* in London TMA, Maastricht, Barcelona, Brussels CANAC and Madrid ACCs;
- En-route disruptions (+147.1%)* in Reims, Karlsruhe, Brest, Bordeaux and Maastricht ACCs;
- En-route capacity (+158.7%)* in Karlsruhe, Nicosia, Maastricht, Reims, Marseille and Beograde ACCs;
- En-route ATC disruption (+50.6%)* in Marseille, Brest, Bordeaux, Ankara and Maastricht ACCs;
- En-route ATC staffing (+187.3%)* in Marseille, Karlsruhe, Maastricht, Reims and Brest ACCs;
- En-route ATC capacity (+73.9%)* in Karlsruhe, Reims, Brest, Maastricht and Langen ACCs.

NOTICE

Traffic and Delay Comparisons

All traffic and delay comparisons are between report month and equivalent month of previous year, unless otherwise stated.

NM Area

All figures presented in this report are for the geographical area that is within Network Manager's responsibility (NM area). For further information on the NM Area go to the Reporting Assumptions and Descriptions document available on the EUROCONTROL website at <http://www.eurocontrol.int/articles/network-operations-monitoring-and-reporting>.

Regulation Reason Groupings

See Analysis for more information on colour coding. For further information on the NM Area and the regulation reason groupings, go to the Reporting Assumptions and Descriptions document available on the EUROCONTROL website at <http://www.eurocontrol.int/articles/network-operations-monitoring-and-reporting>.

ATFM Statistics dashboard

More detailed information available via the new **ATFM Statistics dashboard**

© 2018 The European Organisation for the Safety of Air Navigation (EUROCONTROL).

This document is published by EUROCONTROL in the interests of exchange of information. It may be copied in whole or in part, providing that the copyright notice and disclaimer are included. The information contained in the document may not be modified without prior written permission from EUROCONTROL. EUROCONTROL makes no warranty, either implied or express, for the information contained in this document, neither does it assume any legal liability or responsibility for the accuracy, completeness or usefulness of this information.

Operational Analysis & Reporting,
Performance, Forecasts and Relations (PFR) Unit,
Network Manager Directorate (NMD),
EUROCONTROL,
96 Rue de la Fusée,
B - 1130 Brussels

mailto:nm.ops.perf@eurocontrol.int

<http://www.eurocontrol.int/articles/network-operations-monitoring-and-reporting>

i See Notice on page 4 for more information on NM Area .

ii NM's calculation that provides the guideline en-route delay (min) requirements to achieve the annual target (0.5 min/flight).

iii See notice on page 4 for more information on traffic and delays comparisons.