



Network Manager
nominated by
the European Commission



Monthly Network Operations Report

Overview – August 2016



1. SUMMARY

Traffic in August 2016 increased by 2.8% compared to August 2015 and was above the baseline forecast. This was the highest ever for the month of August. Thirteen states contributed most to the European local trafficⁱ growth in August, with UK, Spain and Italy as the top contributors. Security concerns continued to impact the tourism industry in Turkey; local traffic decreased by 12% and charter traffic to/from Turkey decreased by 56% in August.

Total ATFM delays decreased by 30% in August 2016 compared to August 2015 with the worst days during the weekends. En-route ATFM delays decreased by 31.5%; airport ATFM delays increased by 27.8%.

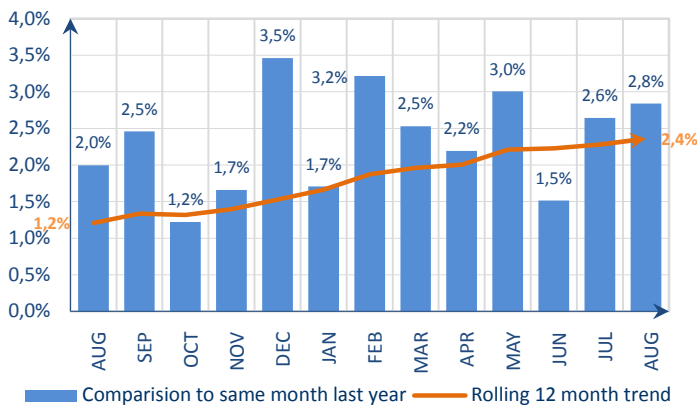
Highlights include:

- En-route ATC capacity delays in Brest, Barcelona, Maastricht, Marseille and Bordeaux ACCs;
- En-route staffing issues in Warsaw, Karlsruhe, Scottish, Nicosia and Langen ACCs;
- En-route weather generated delays in Maastricht, Karlsruhe, Marseille, Reims and Barcelona ACCs;
- Aerodrome capacity issues generated delays at Istanbul/Sabiha Gökçen airport and to a lesser extent at Istanbul/Ataturk, Amsterdam/Schiphol, Paris/Orly and Barcelona airports;
- Seasonal weather impacted operations at London/Heathrow, Vienna, Zurich, Porto and Frankfurt airports;
- ATC capacity issues at Greek island airports due to high demand during summer;
- A-CDM implementation completed at Paris/Orly airport on 18 July;
- Advanced ATC Tower implementation at Alicante airport on 23 August.

The average en-route ATFM delay per flight in NM areaⁱⁱ in August 2016 was 0.95 min/ft, which was above the monthly guidelineⁱⁱⁱ value of 0.81 min/ft. The average YTD en-route ATFM delay per flight in 2016 in the NM area is 1.05 min/ft which is double the corresponding guideline value of 0.56 min/ft.

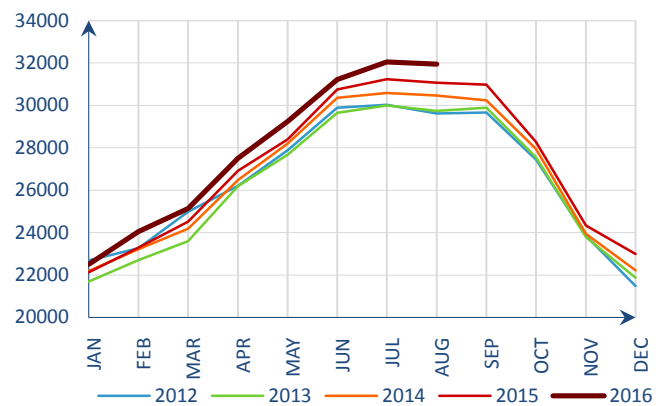
2. TOTAL TRAFFIC

Monthly traffic trend



Traffic increased by 2.8% in August 2016^{iv}.

Average daily traffic for last 5 Years

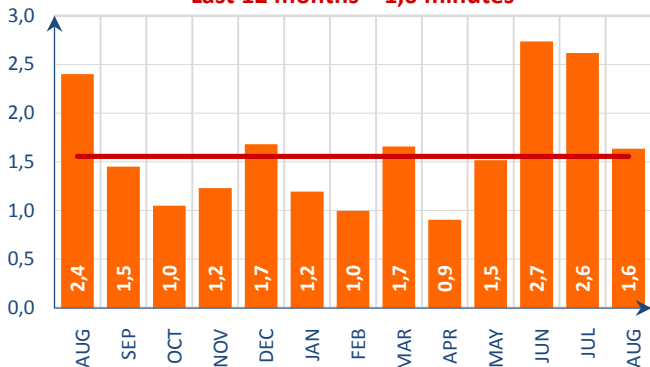


Average daily traffic in August 2016 was the highest ever for the month of August.

3. ATFM DELAYS

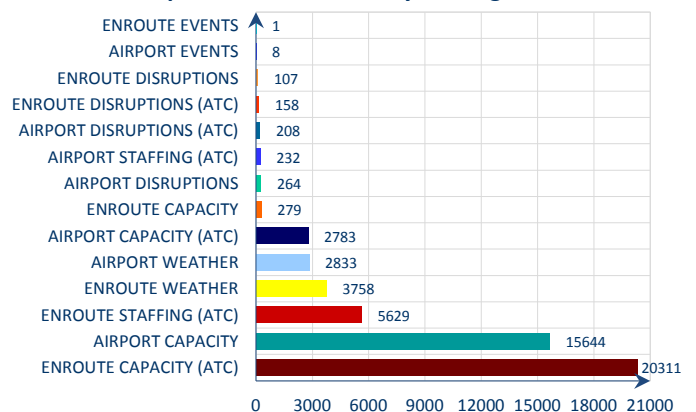
Monthly delay (min) per flight

Last 12 months = 1,6 minutes



Average ATFM delay per flight decreased from 2.4 min/ft to 1.6 min/ft in August 2016^v.

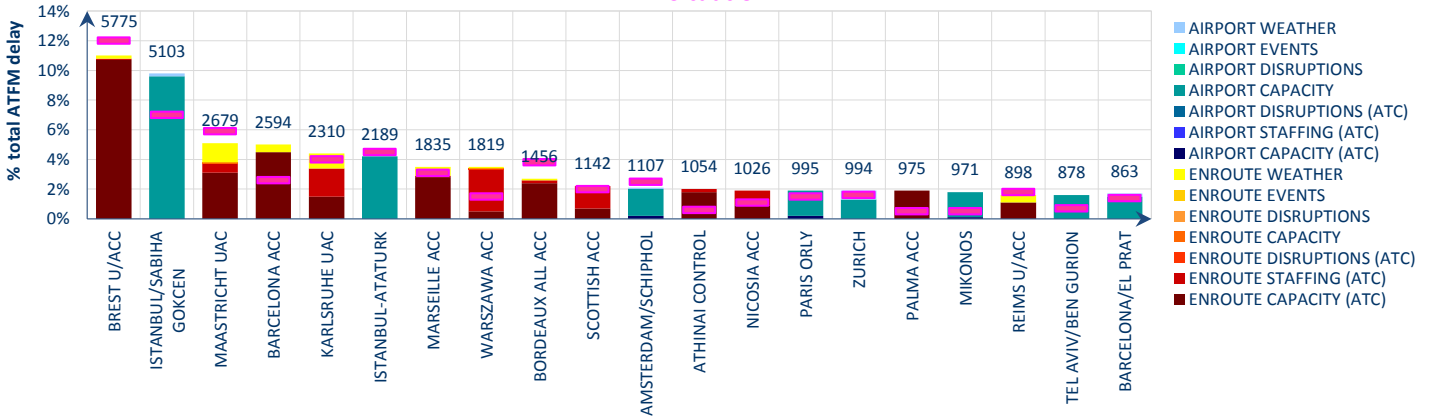
Proportion of ATFM delays in August 2016



En-route ATC capacity (38.9%), airport capacity (30%) and en-route ATC staffing (10.8%) were the main causes of ATFM delays in August 2016.

Top 20 delay locations (min) in August 2016

YTD Situation

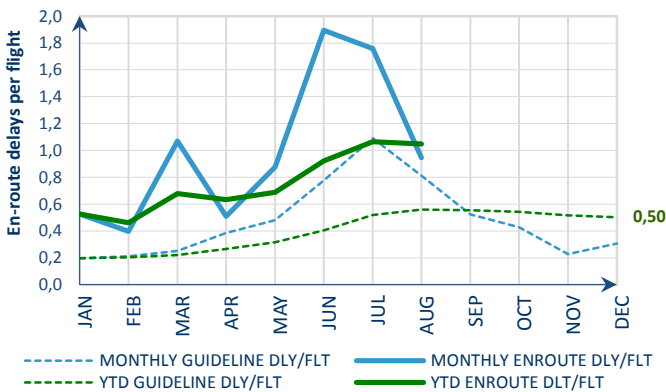


These are the top 20 delay generating locations for the reporting month with respect to total ATFM delays. Figures are the average daily delays in minutes for the individual locations.

- En-route ATC capacity delays in Brest, Maastricht, Barcelona, Karlsruhe, Marseille, Warsaw, Bordeaux, Scottish, Athens, Nicosia, Palma and Reims ACCs;
- En-route weather generated delays in Brest, Maastricht, Barcelona, Karlsruhe, Marseille and Reims ACCs;
- En-route staffing issues in Maastricht, Karlsruhe, Warsaw, Scottish and Nicosia ACCs;
- Aerodrome capacity issues generated delays at Istanbul/Sabiha Gökçen airport and to a lesser extent at Istanbul/Ataturk, Amsterdam/Schiphol, Paris/Orly, Zurich, Mikonos, Tel Aviv and Barcelona airports;
- Seasonal weather impacted operations at Istanbul/Sabiha Gökçen, Istanbul/Atatürk, Amsterdam, Paris/Orly and Zurich airports;

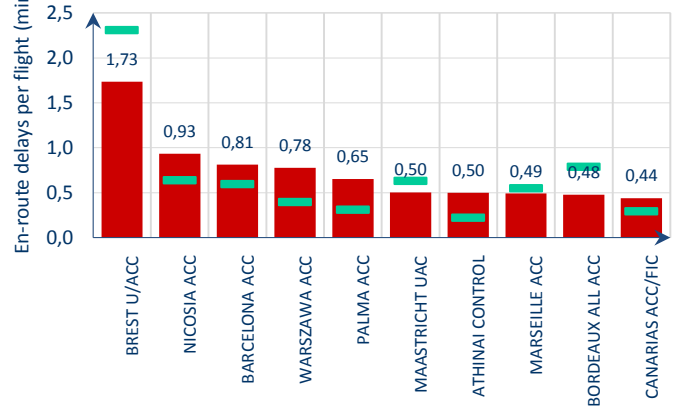
4. EN-ROUTE ATFM DELAY MONITORING

Monthly en-route delay per flight monitoring



Top 10 en-route delay per flight in August 2016

YTD Situation

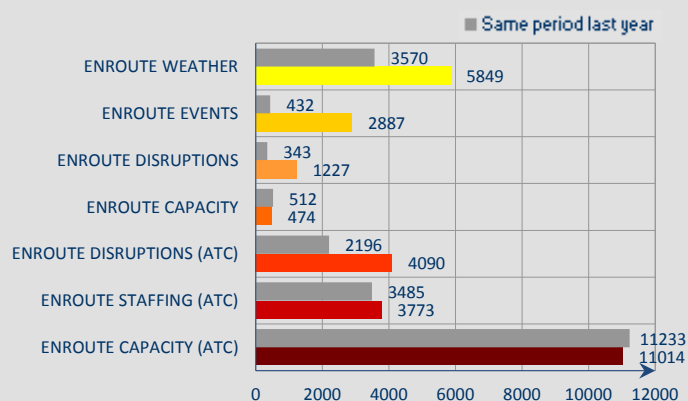


Reporting month: The average en-route ATFM delay per flight in the NM area^v in August was 0,95 min/flt which is above the corresponding monthly guidelineⁱⁱⁱ value of 0,81 min/flt.

Year To Date: The average YTD en-route ATFM delay per flight in 2016 in the NM area is 1,05 min/flt which is above the corresponding guideline value of 0,56 min/flt.

Capacity delays in Brest, Nicosia, Barcelona, Palma, Maastricht, Athens, Marseille, Bordeaux and Canarias ACCs; ATC staffing issues in Nicosia and Warsaw ACCs; Barcelona, Maastricht and Marseille ACCs impacted by en-route weather.

Year-to-date average daily en-route delays



En-route ATFM delays (except ATC capacity and capacity) in 2016 are above the corresponding levels in 2015 with;

- En-route weather* in Karlsruhe, Paris, London TMA, Bordeaux and Reims ACCs;
- En-route events* in Brest, Scottish, Langen and London TMA ACCs;
- En-route disruptions* in Maastricht, Karlsruhe, Barcelona, Brest and Paris ACCs ;
- En-route capacity* in Maastricht, Karlsruhe, Marseille and Brest ACCs;
- En-route ATC disruption* in Brest, Marseille, Paris, Bordeaux and Reims ACCs;
- En-route ATC staffing* in Brussels, Karlsruhe, Warsaw, Langen and London TMA ACCs;
- En-route ATC capacity* delays in Brest, Maastricht, Barcelona, Karlsruhe and Paris ACCs;

NOTICE

Traffic and Delay Comparisons

All traffic and delay comparisons are between report month and equivalent month of previous year, unless otherwise stated.

NM Area

All figures presented in this report are for the geographical area that is within Network Manager's responsibility (NM area).

Regulation Reason Groupings

See Analysis for more information on colour coding.

Reporting Assumptions and Descriptions

For further information on the NM Area and the regulation reason groupings, go to the Reporting Assumptions and Descriptions document available on the EUROCONTROL website at <http://www.eurocontrol.int/articles/network-operations-monitoring-and-reporting>.

© 2016 The European Organisation for the Safety of Air Navigation (EUROCONTROL).

This document is published by EUROCONTROL in the interests of exchange of information. It may be copied in whole or in part, providing that the copyright notice and disclaimer are included. The information contained in the document may not be modified without prior written permission from EUROCONTROL. EUROCONTROL makes no warranty, either implied or express, for the information contained in this document, neither does it assume any legal liability or responsibility for the accuracy, completeness or usefulness of this information.

Operational Analysis & Reporting,
Performance, Forecasts and Relations (PFR) Unit,
Network Manager Directorate (NMD),
EUROCONTROL,
96 Rue de la Fusée,
B - 1130 Brussels
Telephone: +32 (0)2 729 1155
Fax: +32 (0)2 729 9189
mailto:nm.ops.perf@eurocontrol.int
<http://www.eurocontrol.int/articles/network-operations-monitoring-and-reporting>

i Internals, international departures and arrivals, excluding overflights.

ii See Notice on page 1 for more information on NM Area

iii NM's calculation that provides the guideline en-route delay (min) requirements to achieve the annual target (0.5 min/flight).

iv See Notice on page 1 for more information on traffic and delay comparison.