



All-Causes Delay to Air Transport in Europe

November 2018 – based on preliminary airline data*

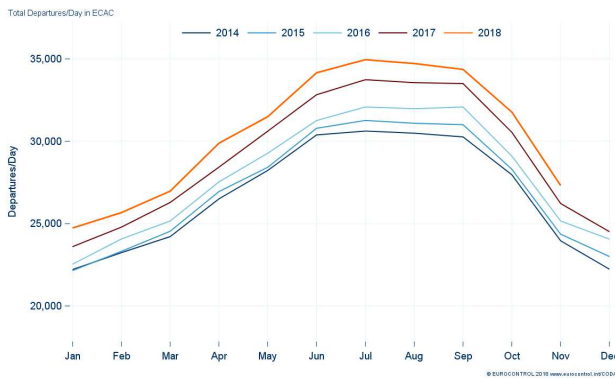
Summary & Significant Events

The all-causes departure delay to air transport in Europe increased to 10.1 minutes per flight in November 2018, up from 9 minutes per flight during November 2017. This change was driven by an increase in reactionary delays (+0.7 mins/ft), en-route ATFM (0.3 mins/ft) and airline (+0.2 mins/ft). Miscellaneous delays (IATA codes 97 to 99) increased to 0.6 mins/ft.

The average delay per delayed flight on arrival increased slightly to 28 minutes per flight with the percentage of delayed flights (>=5 minutes) on arrival increasing to 36%.

Seasonal weather impacted operations strongly at London Heathrow, London Gatwick, Lisbon, Paris CDG, Paris Orly, Barcelona and Amsterdam airports. En-route ATFM capacity delays were generated in Karlsruhe, Lisbon, Canarias, Madrid, Barcelona and Prague ACCs.

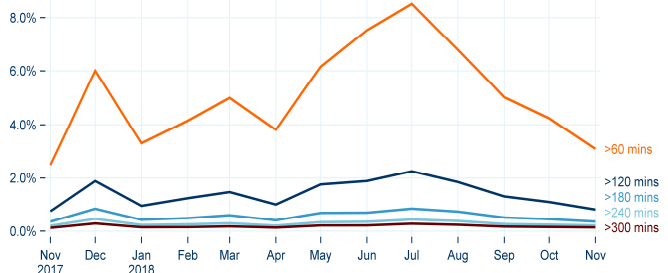
Traffic



In Jan 2018, ECAC saw an increase of 4.2% in the number of flights per day compared to November 2017.

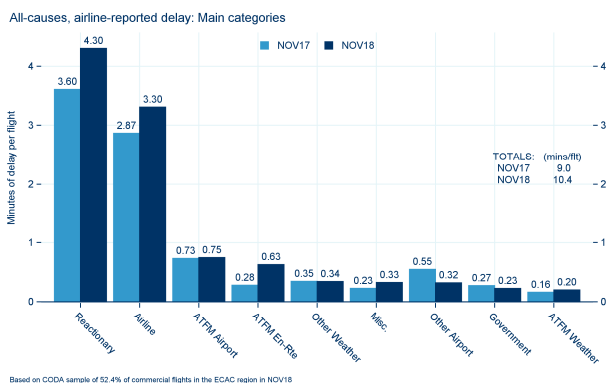
Long Departure Delays All-Causes

Percentage of Flights Delayed on Departure



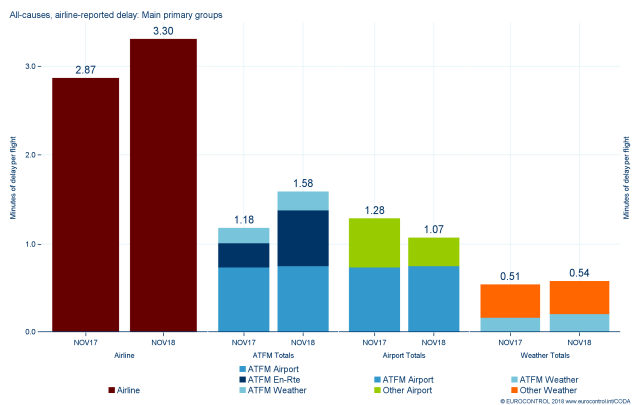
The percentage of delayed flights greater than 60 minutes from all-causes increased to 3.1% (+0.6% compared to November 2017)

Average Delay per Flight by Delay Cause



The average delay per flight in November 2018 was 10.4 minutes per flight an increase from the 9 minutes per flight recorded in November 2017. Reactionary, airline, ATFM en-route and miscellaneous delays increased with airport delays (ATFM and Other) remaining stable or decreasing.

Primary Delay Groupings



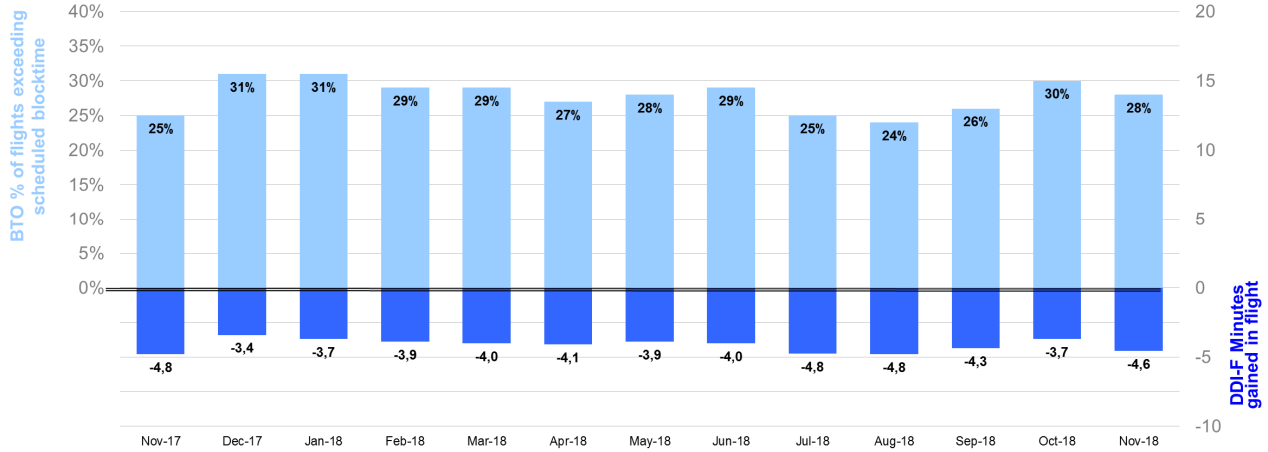
Airline delays increased to 3 minutes per flight in November 2018. Total ATFM delay saw an increase driven by ATFM en-route delay (from 0.3 to 0.6 minutes per flight).

* This CODA report is based on airline data as currently available. Airline data coverage for November 2018 so far is 52%. Date of publication 20/12/2018 Eurocontrol TLP Status: White (Public Information)

CODA Scheduling Indicators

The **Block Time Overshoot (BTO)** or the percentage of flights with an actual block time which exceeds the scheduled block time increased in November 2018 to 28% of flights when compared to a year ago.

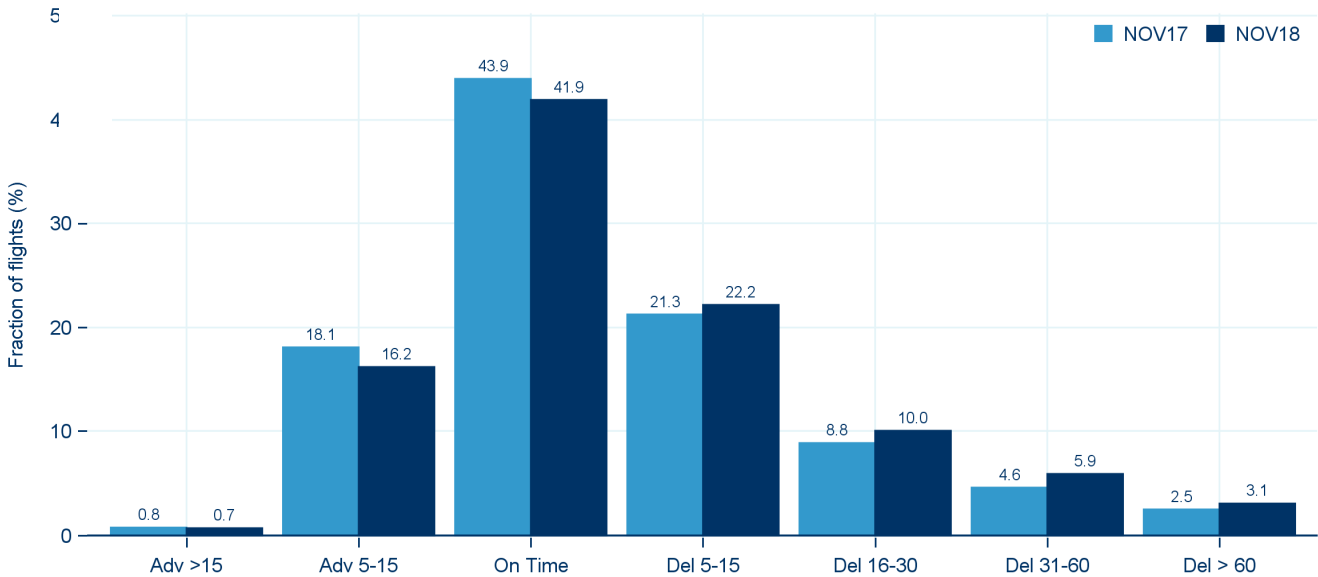
The **Delay Difference Indicator - Flight (DDI-F)** or the difference between departure and arrival punctuality expressed in minutes. This can be indicated as a positive or negative figure, for example a flight departing with a 20 minute delay and arriving with a 30 minute arrival delay will have a DDI-F of +10 minutes. The European DDI-F in November 2018 was -4.6 minutes.



Distribution of All Flights by Length of Delay (Departure Punctuality)

In November 2018, 42% of flights departed within the 5 minute threshold before or after the scheduled departure time (STD), a decrease of 2 percentage points in comparison to November 2017. Flights delayed >30 minutes from all-causes increased to 9% when compared to November 2017.

All-Causes Departure punctuality



Based on CODA sample of 52.4% of commercial flights in the ECAC region in NOV18

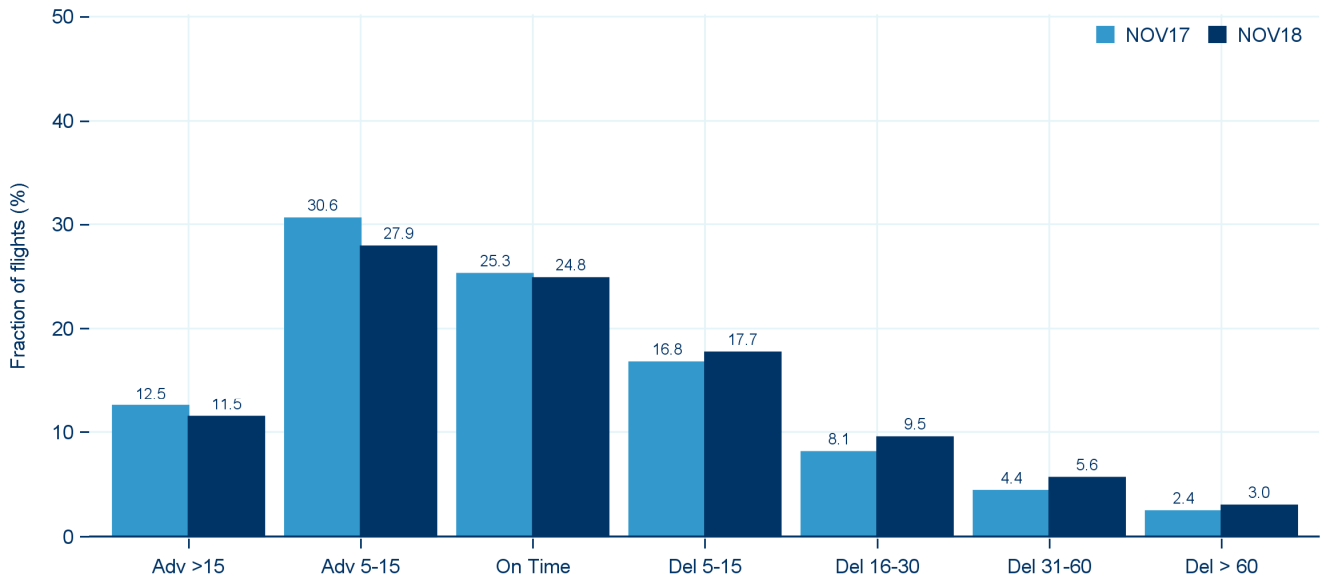
© EUROCONTROL 2018 www.eurocontrol.int/CODA

* This [CODA](#) report is based on airline data as currently available. Airline data coverage for November 2018 so far is 52%
Date of publication 20/12/2018 Eurocontrol TLP Status: White (Public Information)

Distribution of All Flights by Length of Delay (Arrival Punctuality)

Arrival punctuality reduced to 82% of flights arriving within 15 minutes or earlier of their scheduled time of arrival time compared to 85% in November 2017. Flights delayed >30 minutes from all-causes also increased to 9%.

All-Causes Arrival punctuality



Based on CODA sample of 52.4% of commercial flights in the ECAC region in NOV18

© EUROCONTROL 2018 www.eurocontrol.int/CODA

Average Delay per Delayed Flight and Percentage of Delayed Flights Comparison

Departure



Arrival



In November 2018 the average delay per delayed flight (≥ 5 minutes) on departure increased to 26 minutes (+2 min/flt). The percentage of flights delayed on departure increased to 41%, up from 37% in November 2017.

In November 2018 the average delay per delayed flight (≥ 5 minutes) on arrival increased slightly to 28 minutes with the percentage of flights delayed on arrival increasing to 36%.

* This [CODA](#) report is based on airline data as currently available. Airline data coverage for November 2018 so far is 52%.
Date of publication 20/12/2018 Eurocontrol TLP Status: White (Public Information)