

Plan smarter with better taxi-times information

Unpredictable taxi-times make a planner's life very difficult.

- the apron/taxiway layout
- congestion levels
- weather (visibility).

Taxi-times can be influenced by many factors.

Taxi-out times depend on:

- the active runway (this depends on the wind direction or time of day)
- the distance from the gate to the runway
- weather (de-icing needed or low visibility)
- congestion levels - the length of the queue to leave
- apron/taxiway layout
- aircraft type (wake vortex).

Taxi-in times depend on:

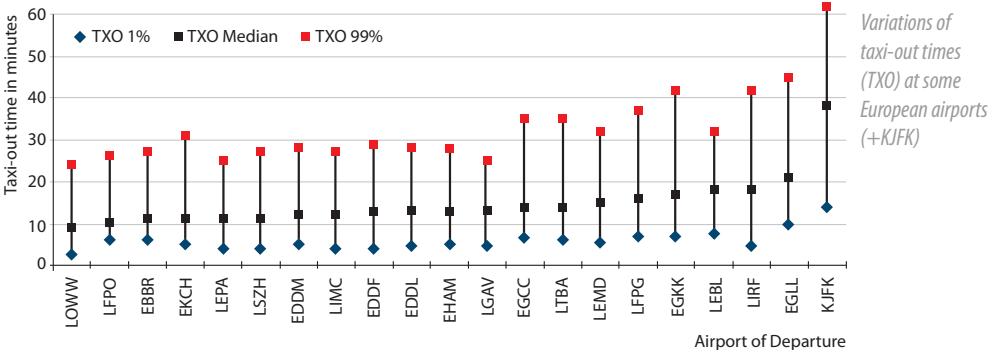
- the distance from the runway to the gate
- the availability of gates

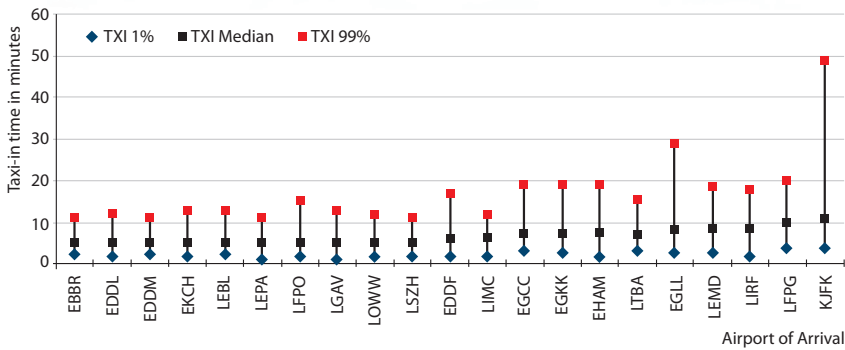
It is a fact that airlines can rarely control taxi-in and taxi-out times, so drawing on their own historical data for taxi times is not enough when planning: a more accurate figure can be obtained by looking at other airlines' data.

CODA, the Central Office for Delay Analysis at EUROCONTROL, has a large database of taxi-in and taxi-out times.

Contact CODA for access to this database

by sending an e-mail to coda@eurocontrol.int or by ringing: +32 2 729 3391.





Variations of taxi-in times (TXI) at some European airports (+KJFK)

Taxi-out time analysis at European airports for IATA
Winter season 2011-2012



<http://www.eurocontrol.int/sites/default/files/content/documents/official-documents/facts-and-figures/coda-reports/coda-iata-w11-taxi-out-times.pdf>