



Network Manager
nominated by
the European Commission



Monthly Network Operations Report

Overview – July 2017



1. SUMMARY

Traffic in July 2017 increased by 5.2% compared to July 2016 and was above the high forecast. Traffic has shown continuous growth since November 2015. Fifteen states contributed most to the European local trafficⁱ growth, with Turkey, Germany and Spain as the top contributors.

Euro-zone economic indicators continue to improve, and Summer traffic growth overall continues to be at or faster than the high-growth forecast, with particular strength in Eastern Europe, including some destinations there showing faster-than-expected recovery.

Total ATFM delays increased by 12.0% in July 2017 compared to July 2016. En-route ATFM delays increased by 18.5% mainly due to weather and airport ATFM delays decreased by 1.2%.

Highlights include:

En-route:

- En route weather delays in Karlsruhe, Marseille, Maastricht, Brest and Vienna ACCs;
- En-route ATC capacity issues in Karlsruhe, Marseille, Maastricht, Brest and Nicosia ACCs;
- En-route ATC staffing issues in Karlsruhe and Nicosia ACCs;

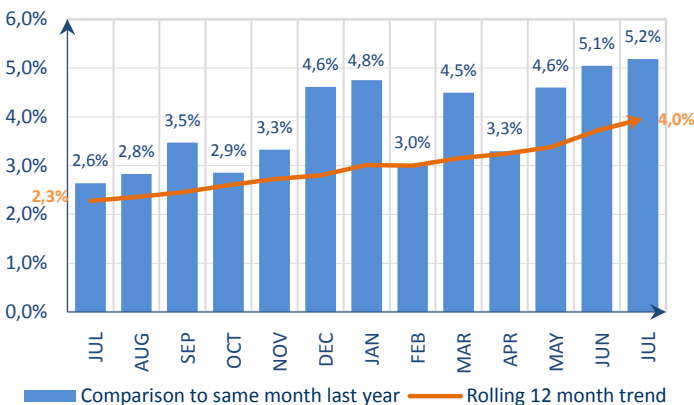
Airport:

- Capacity issue both Istanbul airports, London/Gatwick, Amsterdam/Schiphol and Barcelona airports;
- Seasonal weather impacted both Istanbul airports and Madrid/Barajas airport.

The average en-route ATFM delay per flight in the NM areaⁱⁱ in July was 1.98 min/ft, which is above the corresponding monthly guidelineⁱⁱⁱ value of 1.12 min/ft. The average YTD en-route ATFM delay per flight in 2017 in the NM areaⁱⁱ is 0.87 min/ft, which is above the corresponding guideline value of 0.53 min/ft.

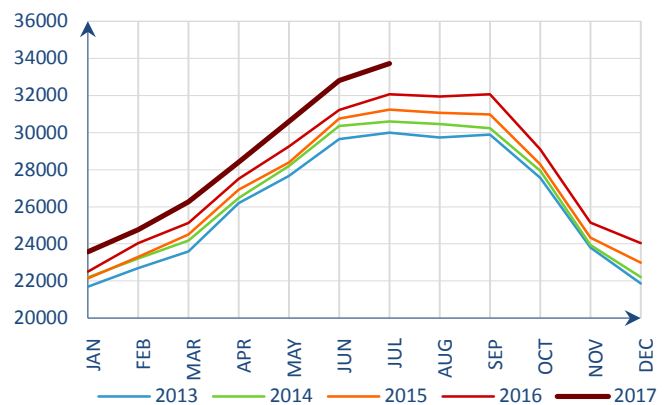
2. TOTAL TRAFFIC

Monthly traffic trend



Traffic increased by 5.2% in July 2017^{iv}.

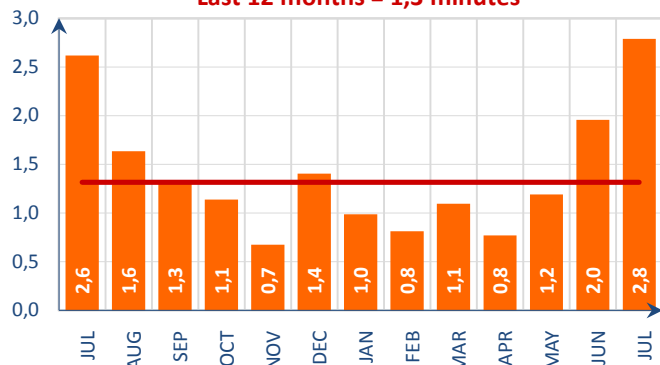
Average daily traffic for last 5 Years



Average daily traffic in July 2017 was the highest for July in the last five years.

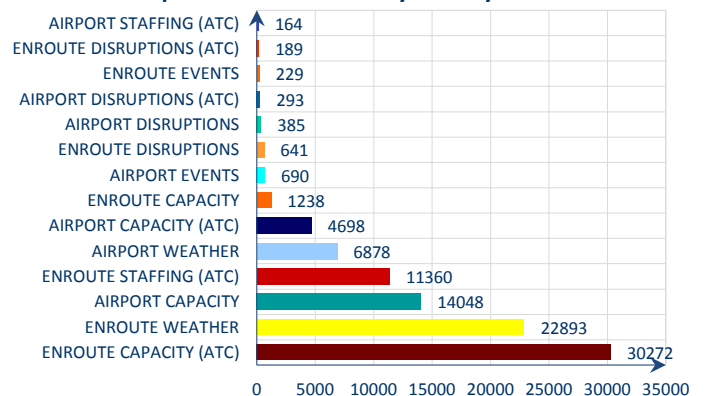
3. ATFM DELAYS

Monthly delay (min) per flight
Last 12 months = 1,3 minutes



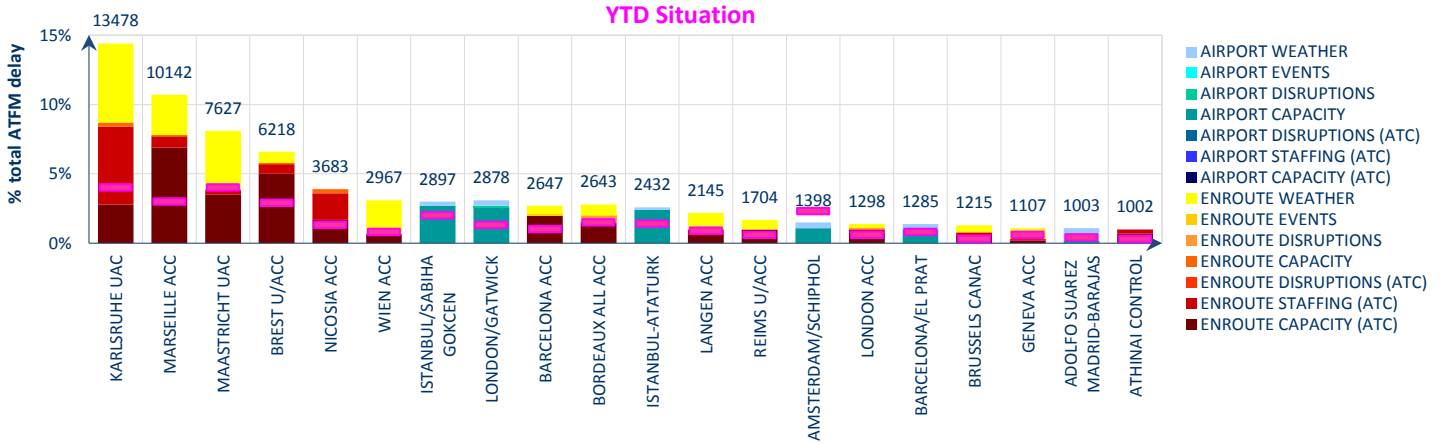
Average ATFM delay per flight increased from 2.0 min/ft in June 2017 to 2.8 min/ft in July 2017.

Proportion of ATFM delays in July 2017



En-route ATC capacity (32.2%), en-route weather (24.4%) and airport capacity (15.0%) were the main causes of ATFM delays in July 2017.

Top 20 delay locations (min) in July 2017

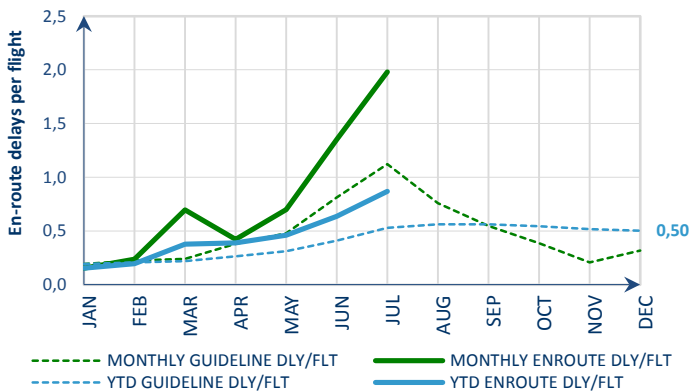


These are the top 20 delay generating locations for the reporting month with respect to total ATFM delays. Figures are the average daily delays in minutes for the individual locations.

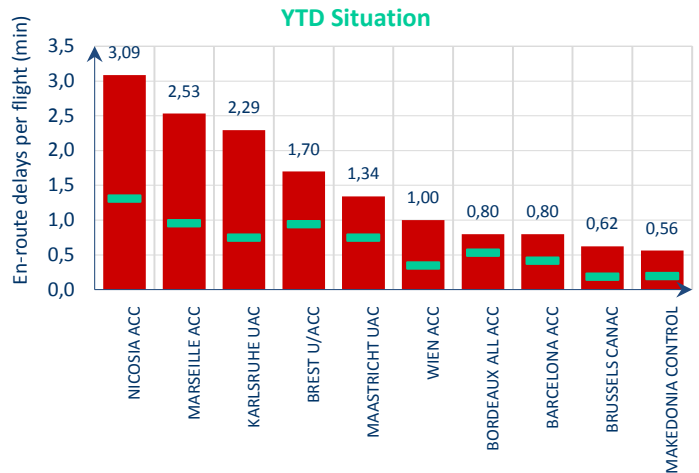
- En route weather delays in Karlsruhe, Marseille, Maastricht, Brest and Vienna ACCs;
- En-route ATC capacity issues in Karlsruhe, Marseille, Maastricht, Brest, Nicosia, Barcelona, Bordeaux, Reims and Athens ACCs;
- En-route ATC staffing issues in Karlsruhe and Nicosia ACCs;
- Capacity issue at both Istanbul airports, London/Gatwick, Amsterdam/Schiphol and Barcelona airports;
- Seasonal weather impacted both Istanbul airports and Madrid/Barajas airport.

4. EN-ROUTE ATFM DELAY MONITORING

Monthly en-route delay per flight monitoring



Top 10 en-route delay per flight in July 2017

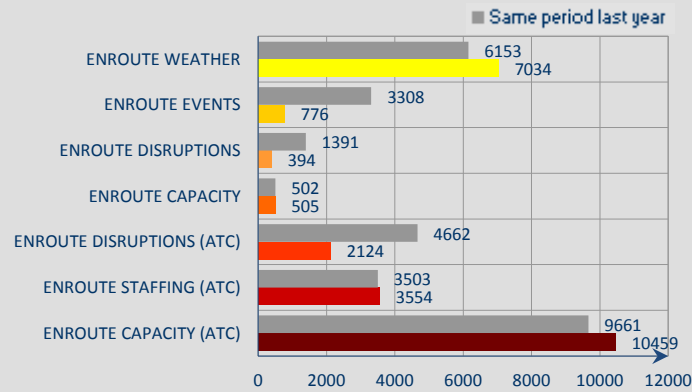


Reporting month: The average en-route ATFM delay per flight in the NM areaⁱⁱ in July was 1.98 min/ft, which is above the corresponding monthly guidelineⁱⁱⁱ value of 1.12 min/ft.

Year To Date: The average YTD en-route ATFM delay per flight in 2017 in the NM areaⁱⁱ is 0.87 min/ft which is above the corresponding guideline value of 0.53 min/ft.

All top 10 ACCs generated an average delay per flight above their year to date average. ATC capacity issues and ATC staffing were the main reason in Nicosia ACC. ATC capacity, en-route weather and ATC staffing in Marseille and Karlsruhe ACCs; ATC capacity in Brest ACC; En-route weather and ATC capacity in Maastricht UAC.

Year-to-date average daily en-route delays



En-route weather, capacity, ATC staffing and ATC capacity are above their year-to-date average with;
En-route weather in Karlsruhe, Maastricht, Marseille, Vienna and Langen ACC;
En-route events in Maastricht, Bordeaux, Barcelona, Brest and Zurich ACCs;
En-route disruptions in Bordeaux, Canarias, Maastricht, Barcelona and Karlsruhe ACCs;
En-route capacity in Nicosia, Maastricht, Karlsruhe, Bordeaux and Brest ACCs;
En-route ATC disruption in Brest, Marseille, Bordeaux, Lisbon and Geneva ACCs;
En-route ATC staffing in Karlsruhe, Nicosia, Maastricht, Brest and Langen ACCs;
En-route ATC capacity delays in Brest, Maastricht, Marseille, Karlsruhe and Barcelona ACCs.

NOTICE

Traffic and Delay Comparisons

All traffic and delay comparisons are between report month and equivalent month of previous year, unless otherwise stated.

NM Area

All figures presented in this report are for the geographical area that is within Network Manager's responsibility (NM area). For further information on the NM Area go to the Reporting Assumptions and Descriptions document available on the EUROCONTROL website at <http://www.eurocontrol.int/articles/network-operations-monitoring-and-reporting>.

Regulation Reason Groupings

See Analysis for more information on colour coding. For further information on the NM Area and the regulation reason groupings, go to the Reporting Assumptions and Descriptions document available on the EUROCONTROL website at <http://www.eurocontrol.int/articles/network-operations-monitoring-and-reporting>.

© 2017 The European Organisation for the Safety of Air Navigation (EUROCONTROL).

This document is published by EUROCONTROL in the interests of exchange of information. It may be copied in whole or in part, providing that the copyright notice and disclaimer are included. The information contained in the document may not be modified without prior written permission from EUROCONTROL. EUROCONTROL makes no warranty, either implied or express, for the information contained in this document, neither does it assume any legal liability or responsibility for the accuracy, completeness or usefulness of this information.

Operational Analysis & Reporting,
 Performance, Forecasts and Relations (PFR) Unit,
 Network Manager Directorate (NMD),
 EUROCONTROL,
 96 Rue de la Fusée,
 B - 1130 Brussels

mailto:nm.ops.perf@eurocontrol.int
<http://www.eurocontrol.int/articles/network-operations-monitoring-and-reporting>

i Internals, international departures and arrivals, excluding overflights.

ii See Notice on page 4 for more information on NM Area .

iii NM's calculation that provides the guideline en-route delay (min) requirements to achieve the annual target (0.5 min/flight).

iv See notice on page 4 for more information on traffic and delays comparisons.