

MUAC

Maastricht Upper Area Control Centre



MUAC airspace



Cross-border sectors based on functional rather than national boundaries

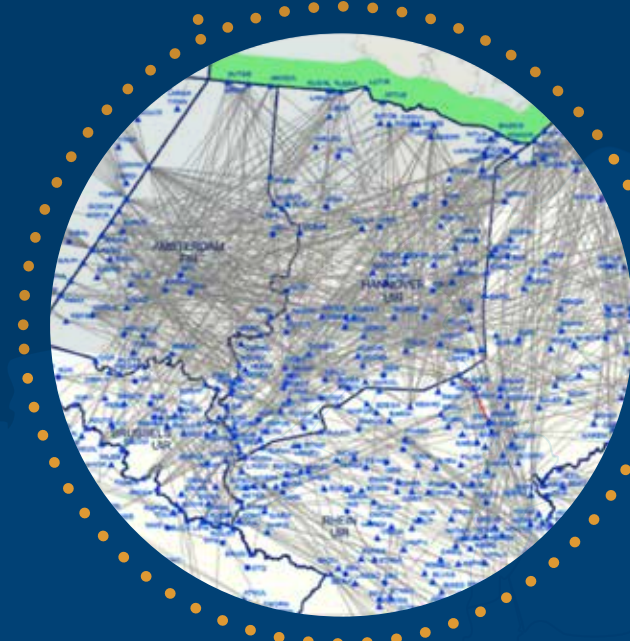
Sector throughput: up to **80 aircraft/hour**

Variable Division Flight level for more effective airspace management

Seamless technology across the 4 States

Europe's large-scale multinational air traffic control facility:

260,000 km² over Belgium, Luxembourg, the Netherlands, and north-west Germany
of upper airspace
(above 24,500 feet)

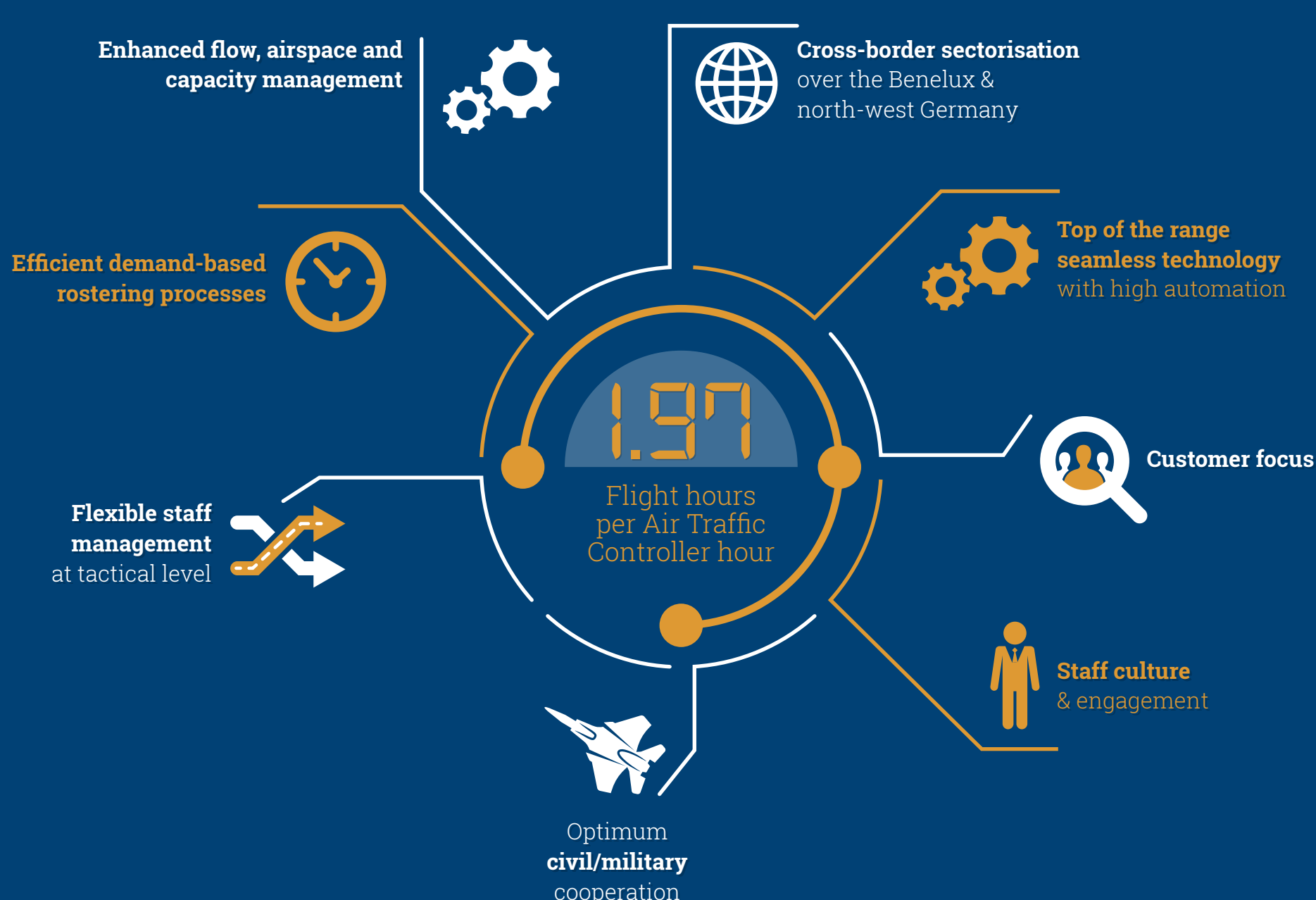


Dense direct route network

Over 500 direct routes connected to neighbouring airspace

More than 65% of aircraft operators use these routes on a regular basis

Air traffic controller productivity



+61% above the average of 11 ACCs serving dense upper airspace

(Source: ACE 2015, May 2017, p. 31)

Traffic

- Yearly traffic (2016): **1.77 M flights**
- Average daily traffic (2016): **4,863 flights**
- Peak daily traffic (2017): **5,657 flights**
- 80% of the traffic** is climbing from and descending to Europe's busiest hubs
- MUAC handles **17%** of European traffic and represents **1.7%** of European system gate-to-gate ATM/CNS provision costs

Operational conditions

Aggregated complexity score

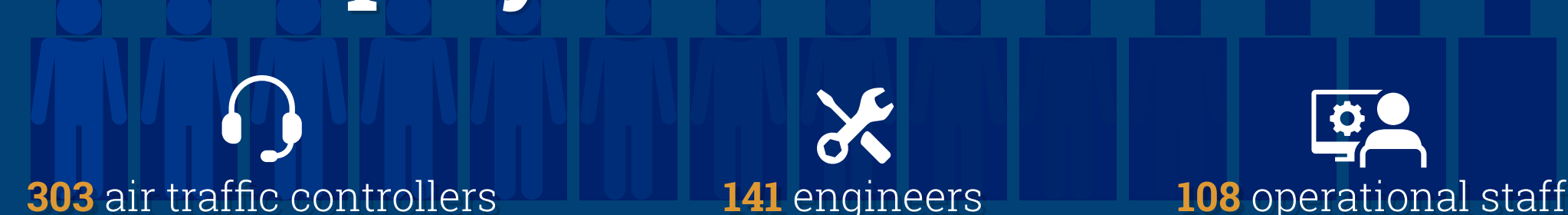


Seasonal traffic variability



(Source: ACE 2015, May 2017, p. 106)

661 employees / 29 nationalities



61 support & management staff

48 former Lippe staff