

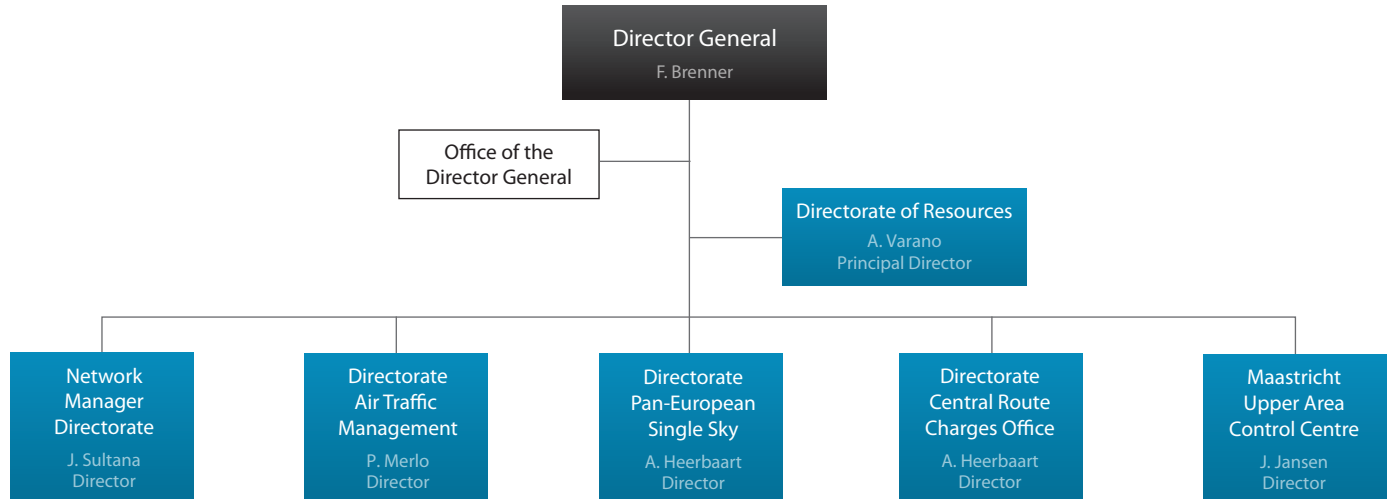
The EUROCONTROL Agency Structure



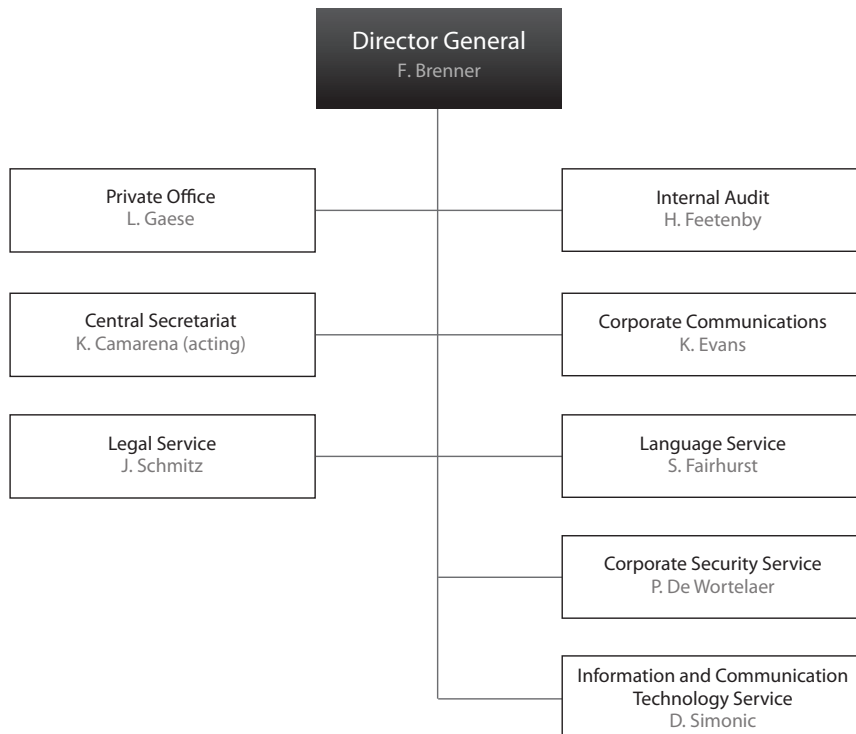
Table of contents

EUROCONTROL Agency Structure	4
Office of the Director General	5
Directorate of Resources	6
Network Manager Directorate	7
Directorate Air Traffic Management	8
Directorate Pan-European Single Sky	9
Directorate Central Route Charges Office	10
Maastricht Upper Area Control Centre	11

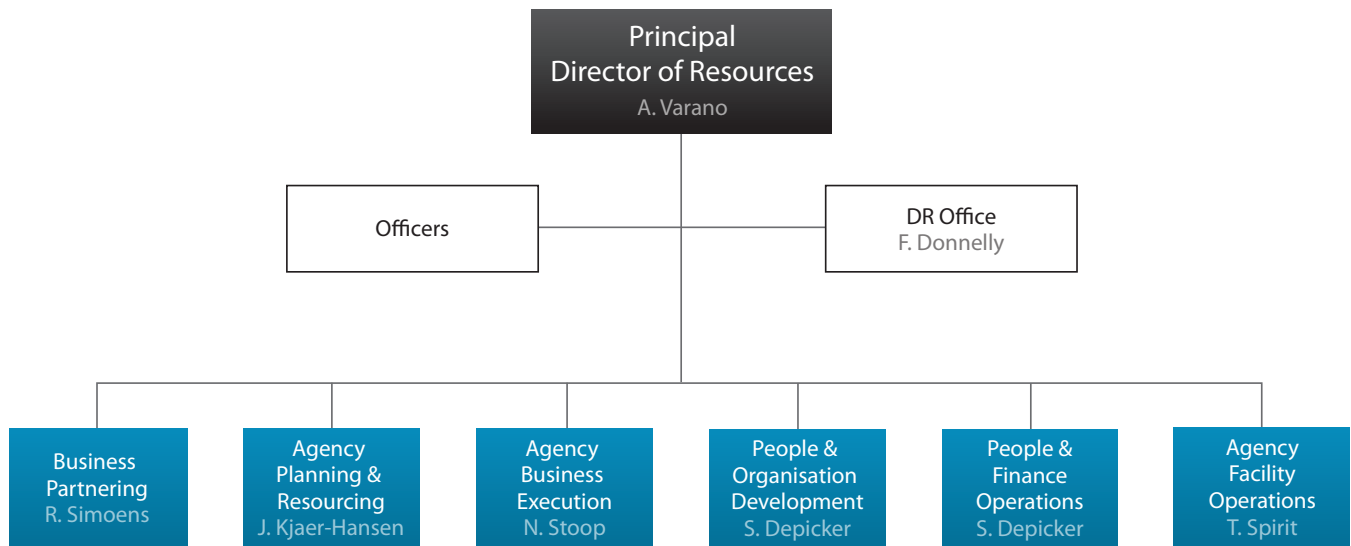
EUROCONTROL Agency Structure



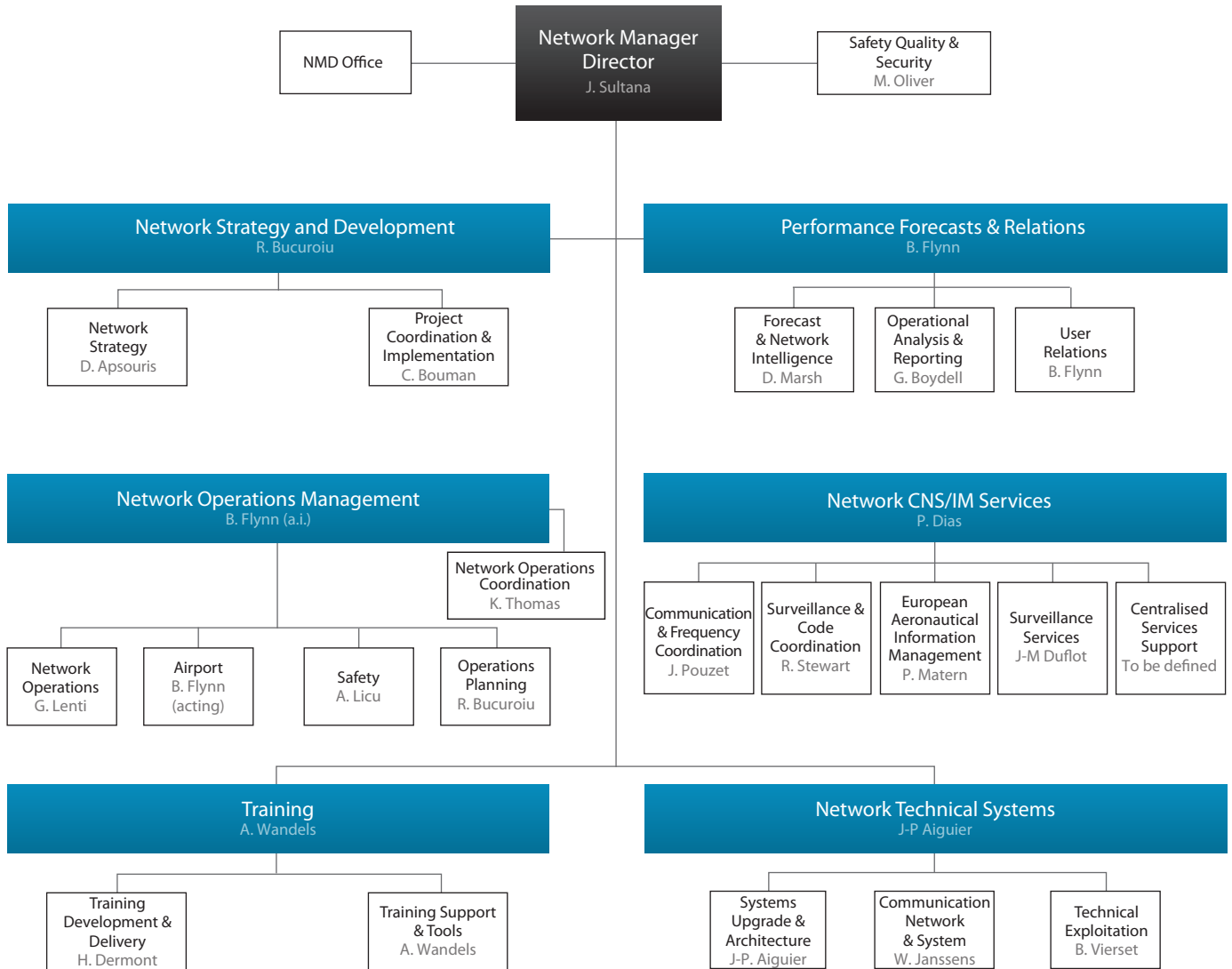
Office of the Director General



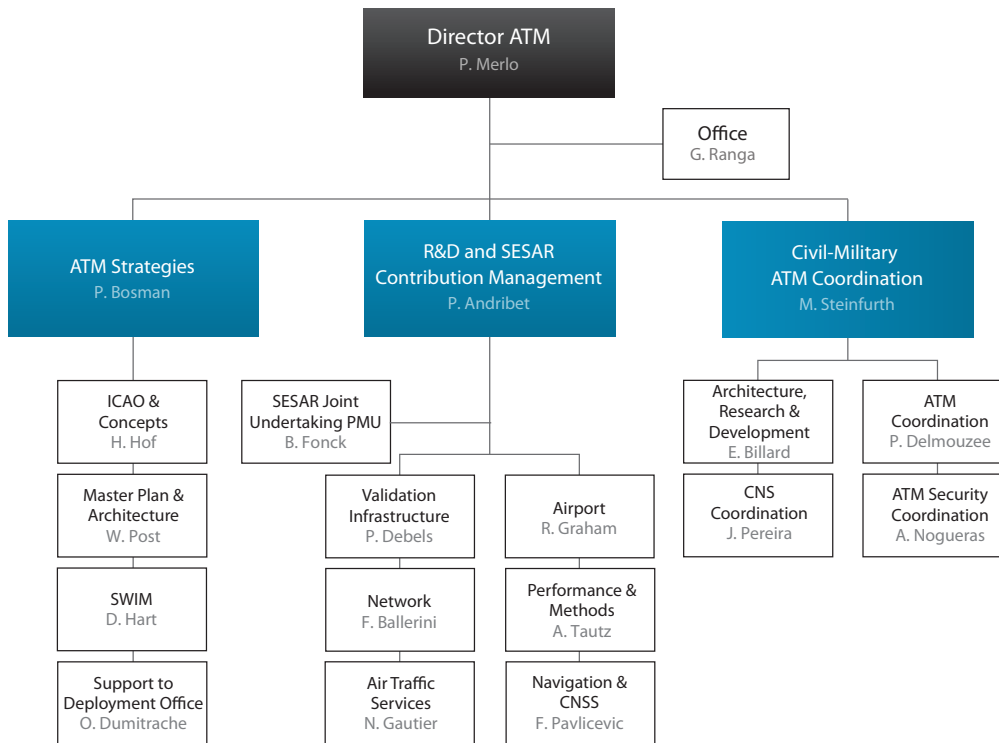
Directorate of Resources



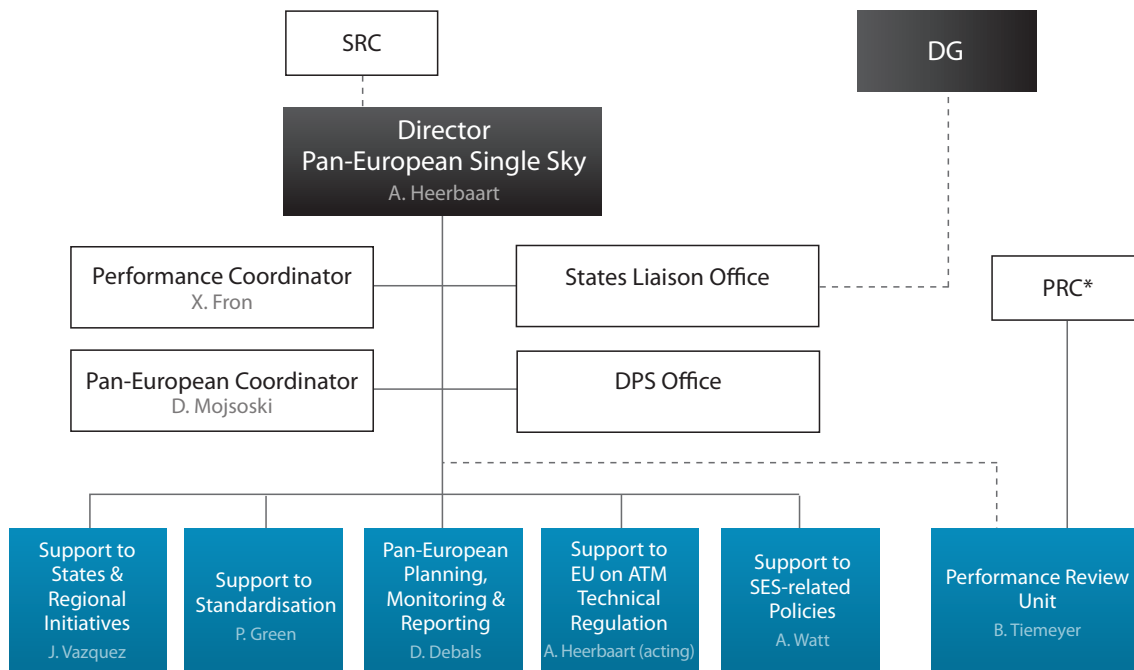
Network Manager Directorate



Directorate Air Traffic Management

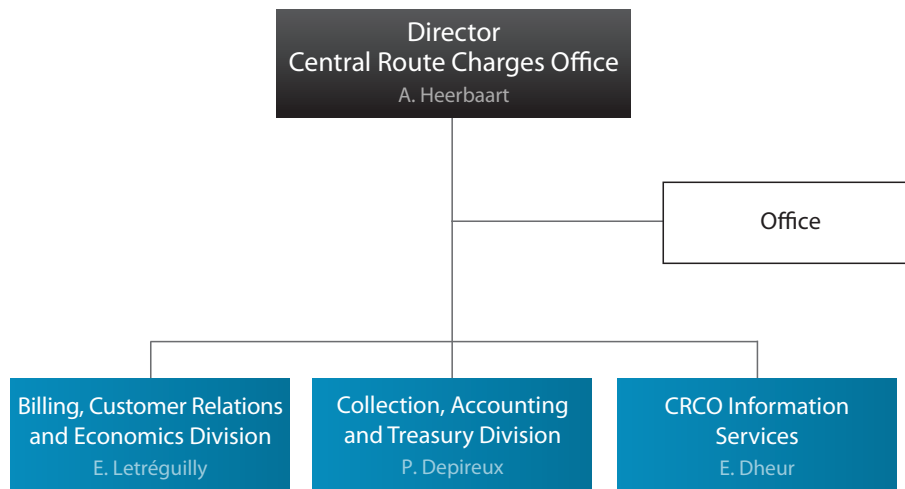


Directorate Pan-European Single Sky

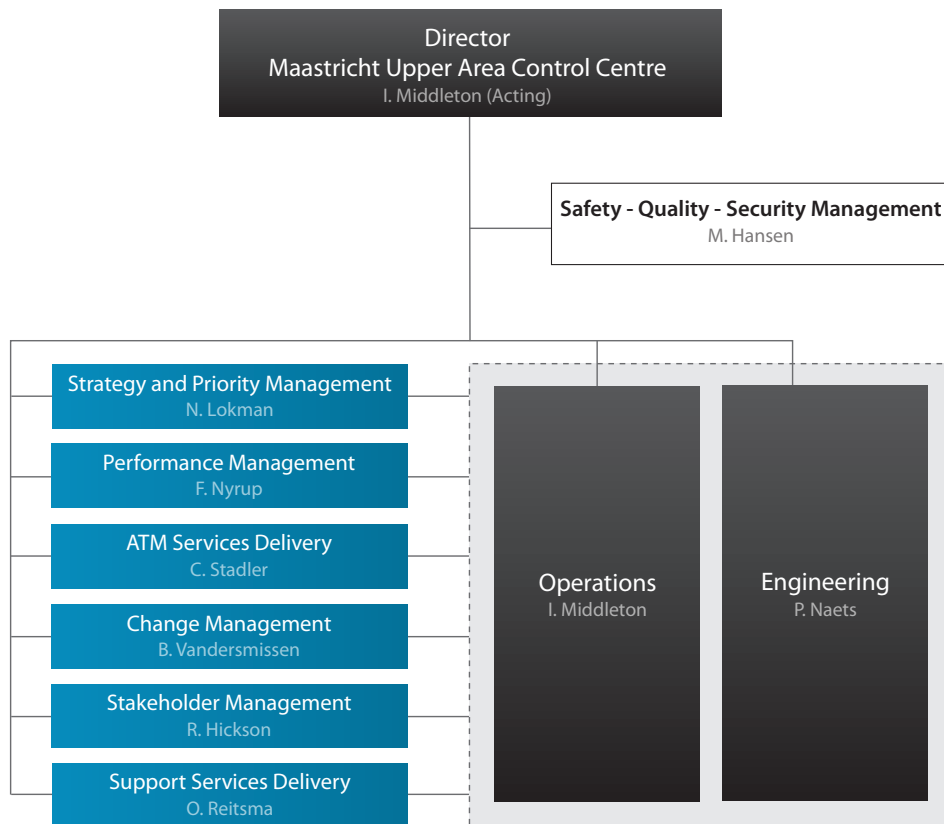


*Acting as PRB

Directorate Central Route Charges Office



Maastricht Upper Area Control Centre



EUROCONTROL offices



BRUSSELS

Headquarters

Rue de la Fusée 96 B-1130 Brussels

Tel: +32 2 729 90 11

Fax: +32 2 729 90 44



MAASTRICHT

Maastricht Upper Area Control Centre

Horsterweg 11 – NL-6199 AC Maastricht-Airport

Tel: +31 43 366 1234

Fax: +31 43 366 1300



BRETIGNY

EUROCONTROL Experimental Centre

Centre du Bois des Bordes, CS 41 005 – F-91222 Brétigny sur Orge

Tel: +33 1 6988 7500

Fax: +33 1 6988 7505



LUXEMBOURG

Institute of Air Navigation Services

12, rue Antoine de Saint-Exupéry – L-1432 Luxembourg

Tel: +352 4360 611

Fax: +352 4360 615 61



EUROCONTROL

© March 2017 – European Organisation for the Safety of Air Navigation (EUROCONTROL)

This document is published by EUROCONTROL for information purposes. It may be copied in whole or in part, provided that EUROCONTROL is mentioned as the source and it is not used for commercial purposes (i.e. for financial gain). The information in this document may not be modified without prior written permission from EUROCONTROL.

www.eurocontrol.int