

# The EUROCONTROL Agency Structure





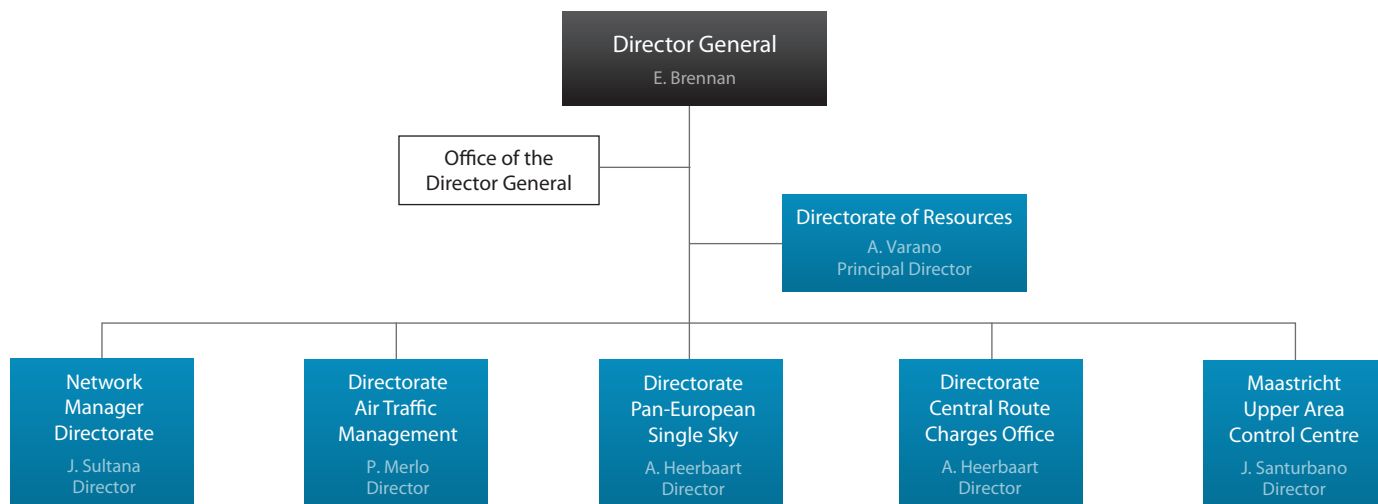
# Table of contents

---

<b>EUROCONTROL Agency Structure</b>	<b>4</b>
<b>Office of the Director General</b>	<b>5</b>
<b>Directorate of Resources</b>	<b>6</b>
<b>Network Manager Directorate</b>	<b>7</b>
<b>Directorate Air Traffic Management</b>	<b>8</b>
<b>Directorate Pan-European Single Sky</b>	<b>9</b>
<b>Directorate Central Route Charges Office</b>	<b>10</b>
<b>Maastricht Upper Area Control Centre</b>	<b>11</b>

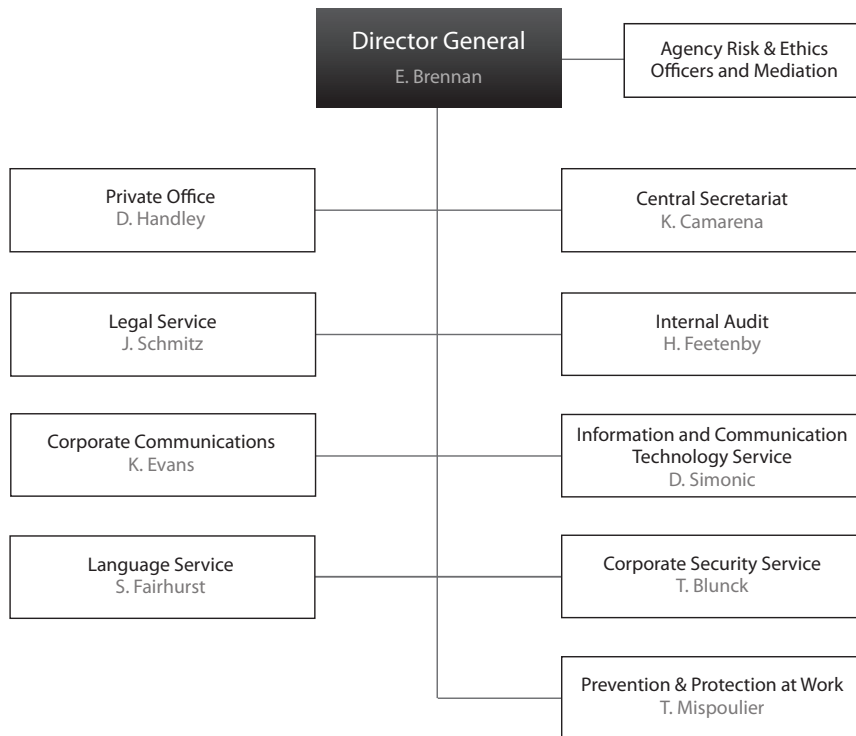
# EUROCONTROL Agency Structure

---



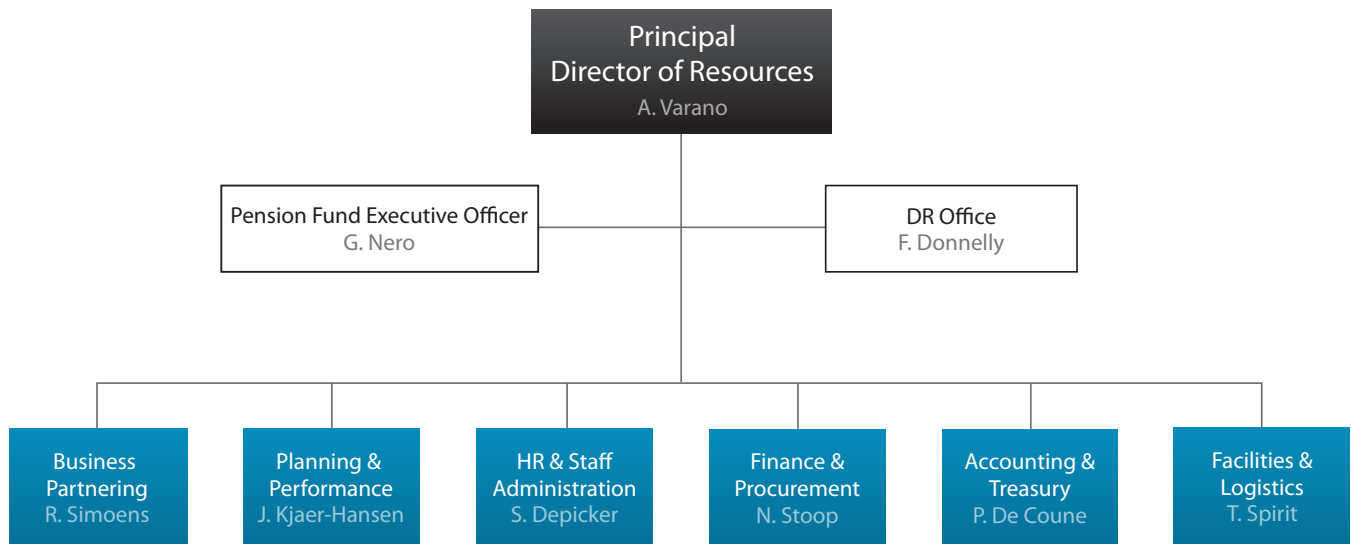
# Office of the Director General

---

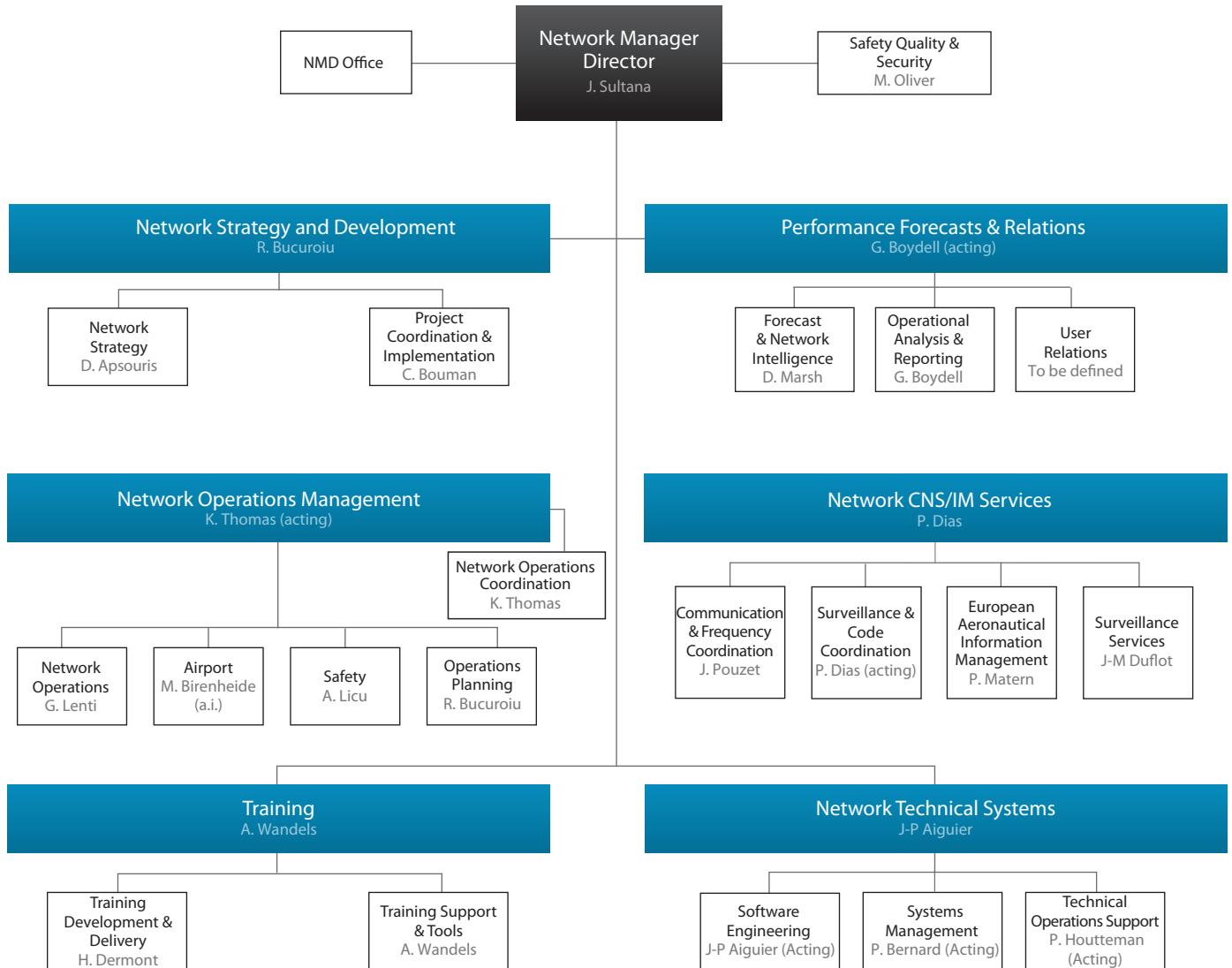


# Directorate of Resources

---

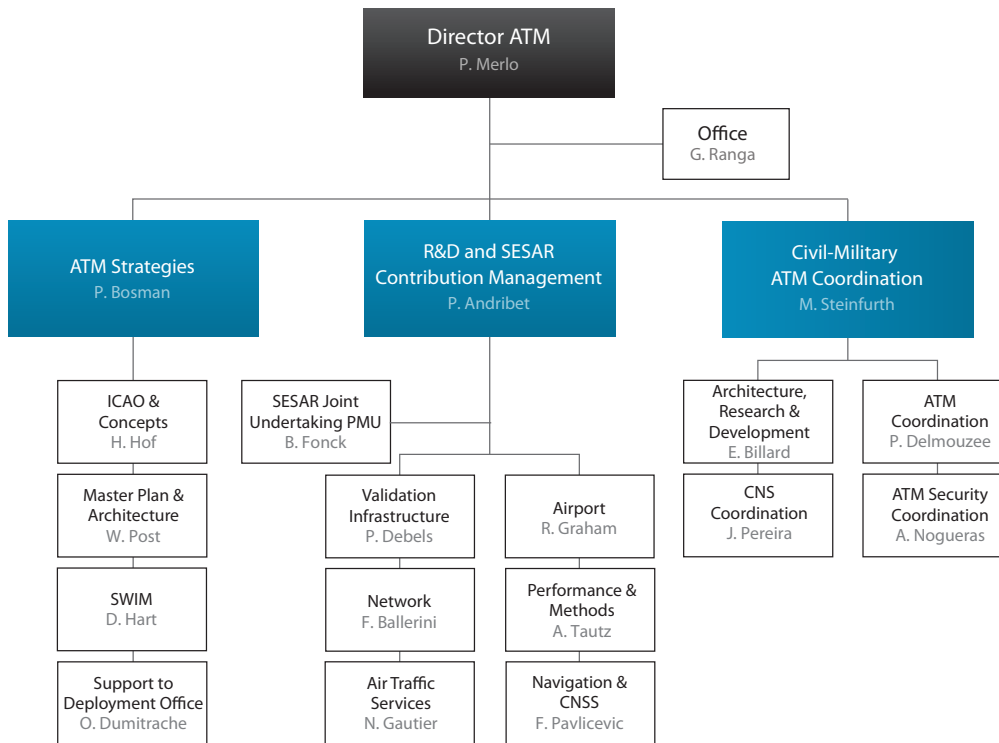


# Network Manager Directorate



# Directorate Air Traffic Management

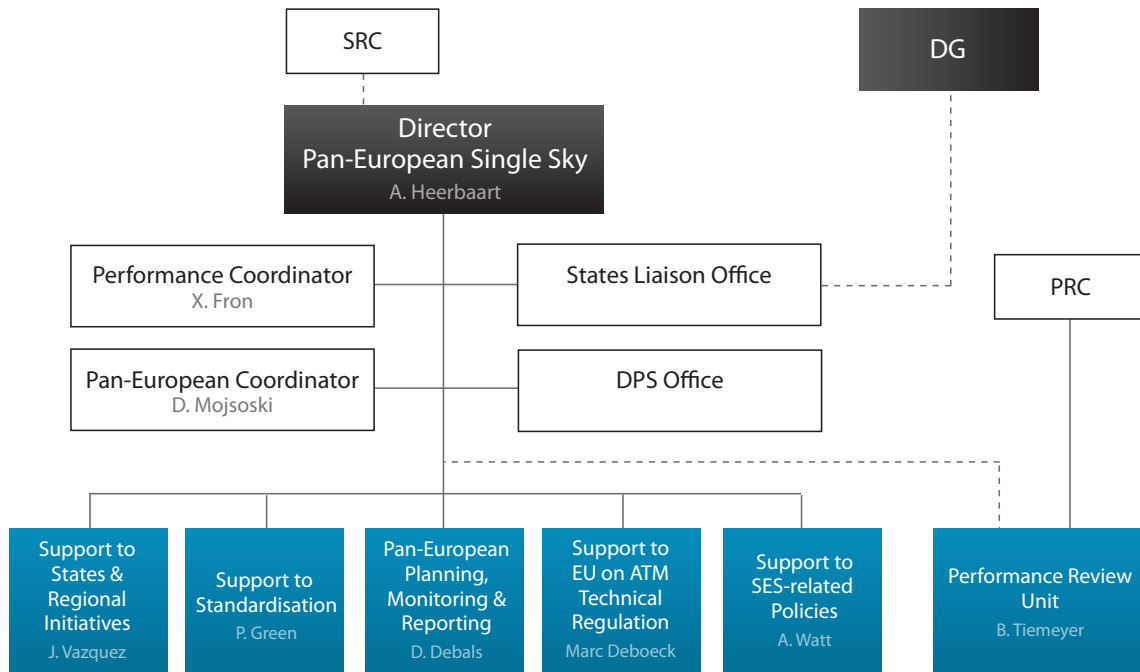
---





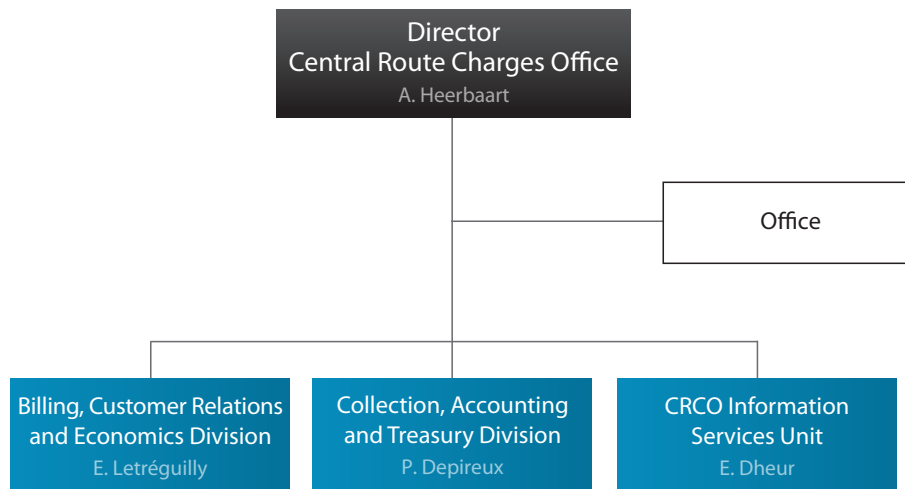
# Directorate Pan-European Single Sky

---



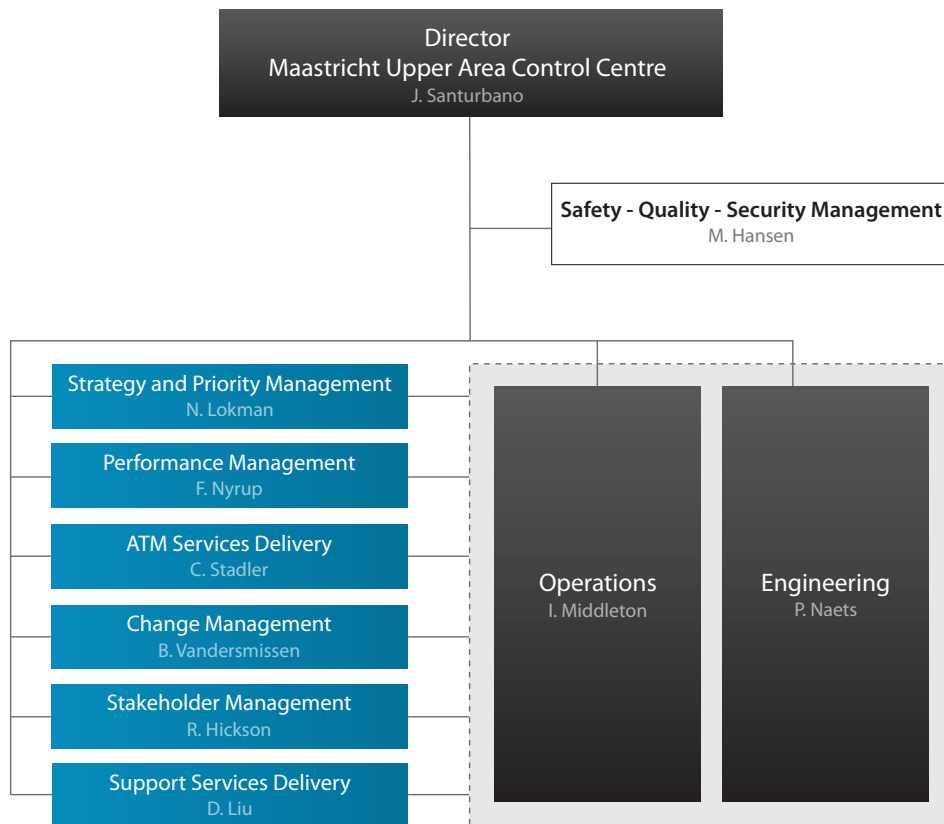
# Directorate Central Route Charges Office

---



# Maastricht Upper Area Control Centre

---



# EUROCONTROL offices

---



## **BRUSSELS**

### **Headquarters**

Rue de la Fusée 96 B-1130 Brussels

Tel: +32 2 729 90 11

Fax: +32 2 729 90 44



## **MAASTRICHT**

### **Maastricht Upper Area Control Centre**

Horsterweg 11 – NL-6199 AC Maastricht-Airport

Tel: +31 43 366 1234

Fax: +31 43 366 1300



## **BRETIGNY**

### **EUROCONTROL Experimental Centre**

Centre du Bois des Bordes, CS 41 005 – F-91222 Brétigny sur Orge

Tel: +33 1 6988 7500

Fax: +33 1 6988 7505



## **LUXEMBOURG**

### **Institute of Air Navigation Services**

12, rue Antoine de Saint-Exupéry – L-1432 Luxembourg

Tel: +352 4360 611

Fax: +352 4360 615 61



**EUROCONTROL**

© March 2018 – European Organisation for the Safety of Air Navigation (EUROCONTROL)

This document is published by EUROCONTROL for information purposes. It may be copied in whole or in part, provided that EUROCONTROL is mentioned as the source and it is not used for commercial purposes (i.e. for financial gain). The information in this document may not be modified without prior written permission from EUROCONTROL.

[www.eurocontrol.int](http://www.eurocontrol.int)